



VENTURA LOCAL AGENCY FORMATION COMMISSION  
**STAFF REPORT**

Meeting Date: July 19, 2023

**TO:** LAFCo Commissioners  
**FROM:** Andrea Ozdy, Deputy Executive Officer *Andrea Ozdy*  
**SUBJECT:** Sphere of Influence Review: LAFCo 23-22S City of Thousand Oaks

**Recommendation:**

Adopt Resolution LAFCo 23-22S (Attachment 2) making determinations and reviewing the sphere of influence for the City of Thousand Oaks (City) pursuant to Government Code Section 56425(g), including that a sphere of influence update is not necessary.

**City Information:**

The City of Thousand Oaks was incorporated on October 7, 1964, and is governed by a five-member city council. The City provides a variety of municipal services, including animal services, building and safety services, community development/planning services, library services, police services, solid waste collection and disposal services, storm drain maintenance services, street maintenance services, transit services, wastewater services, and water services. Depending on the service category, services are provided directly or by contract with other public or private providers. The City’s sphere of influence covers approximately 37,356 acres (about 58.4 square miles), and its jurisdictional area covers approximately 35,485 acres (Attachment 1).

**Background:**

Pursuant to the Cortese-Knox-Hertzberg Local Government Reorganization Act of 2000 (Government Code Section 56000 et seq.), the Commission was required to determine and adopt a sphere of influence (or “sphere”) for each city and special district on or before January 1, 2008. A sphere of influence is defined in Government Code Section 56076 as the probable physical boundary and service area of a local agency, as determined by the Commission. Every five years thereafter, the Commission must, as necessary, review and update each sphere of influence (Government Code Section 56425(g)).

COMMISSIONERS AND STAFF

COUNTY	CITY	DISTRICT	PUBLIC
Jeff Gorell	Jenny Crosswhite, Vice-Chair	Raul Avila	Pat Richards, Chair
Janice S. Parvin <i>Alternate</i>	John C. Zaragoza <i>Alternate</i>	Mary Anne Rooney <i>Alternate</i>	<i>Alternate</i>
Matt LaVere	Susan Santangelo	Mohammed A. Hasan	David J. Ross
<b>Executive Officer</b> Kai Luoma	<b>Deputy Executive Officer</b> Andrea Ozdy	<b>Office Manager/Clerk</b> Richelle Beltran	<b>Legal Counsel</b> Jeffrey Barnes

In compliance with Government Code Section 56425(g), the Commission accepted municipal service review (MSR) reports for the City in 2007, 2012, and 2018. The City's most recent MSR report, titled *City of Thousand Oaks Municipal Service Review*, was accepted by the Commission on February 21, 2018. All of the MSRs conducted by LAFCo for the City are available on the [LAFCo website](#).

LAFCo's past sphere of influence reviews for the City are summarized as follows:

1. On April 18, 2007 (based on LAFCo's March 21, 2007, MSR prepared for the City), the Commission updated the City's sphere to correct minor mapping errors.
2. On November 14, 2012 (in conjunction with LAFCo's November 14, 2012, MSR prepared for the City), LAFCo reviewed (but made no changes to) the City's sphere of influence.
3. On February 21, 2018 (in conjunction with LAFCo's February 21, 2018, MSR prepared for the City), LAFCo reviewed (but made no changes to) the City's sphere of influence.

### **Discussion:**

#### *Sphere of Influence Evaluation*

Based on the work plan established by the Commission, an evaluation of the City's sphere of influence is to be initiated in 2023. LAFCo staff consulted with City staff to discuss the City's sphere of influence, and to determine: (1) if the City has experienced any changes to its service needs or areas since LAFCo's most recent evaluation of its sphere of influence, and (2) if City staff anticipates any service changes that would warrant adjustment of the sphere boundaries.

As explained in the analysis below, it appears that the existing sphere of influence boundary continues to reflect the City's current and probable service area, consistent with the land use map contained within the City's General Plan and the MSR report accepted by the Commission in 2018 (which demonstrates that the City has the ability to provide services at acceptable levels). Therefore, no changes to the sphere of influence for the City are recommended. The sphere of influence review involving no changes is not subject to the California Environmental Quality Act (CEQA) CEQA because it "will not result in a direct or reasonably foreseeable indirect physical change in the environment" (CEQA Guidelines Section 15060(c)(2)).

#### *Written Determinations*

Government Code Section 56425(e) requires that, in determining the sphere of influence of an agency, the Commission consider and prepare a written statement of its determinations with respect to each of the following:

(1) *The present and planned land uses in the area, including agricultural and open-space lands.* (Section 56425(e)(1))

The City's sphere of influence includes residential, commercial, industrial, public, and open space uses, as reflected on the land use map of the City's General Plan. The City's current sphere supports the present and planned land uses established by the City's General Plan. The City's sphere includes several unincorporated islands.<sup>1</sup> These include three larger communities (i.e., Casa Conejo, Lynn Ranch, and Rolling Oaks) and four smaller islands in the Kelley Estates area that consist of existing developed areas. Additionally, the unincorporated community of Ventu Park is substantially surrounded by the City. This area is provided municipal services by the City, and LAFCo routinely authorizes additional wastewater and/or water service by the City to parcels within this area by means of extraterritorial service agreements (i.e., out-of-agency service agreements, otherwise known as OASAs). Additionally, the City's sphere of influence contains area south of the City that is designated by the City for parks, golf course, open space, and residential uses, and includes land designated as undevelopable. Land within this area primarily includes developed residential parcels in the Ventu Park area closest to the existing City boundary, sparsely-populated areas along White Stallion Road (accessed from the Hidden Valley community along Potrero Road), and open space.

(2) *The present and probable need for public facilities and services in the area.* (Section 56425(e)(2))

The City provides a variety of public facilities and services within its service area, and there are no anticipated changes in the type of public facilities and services that it provides. Based on the land use designations and characteristics of the land contained within the City's sphere, no changes to existing and planned land uses are expected. The U.S. Census Bureau estimated the City's population in 2021 to be 125,754. According to the *2020-2045 Regional Transportation Plan/Sustainable Communities Strategy (RTP/SCS)*, adopted by the Southern California Association of Governments in 2020, the City is anticipated to experience growth resulting in a population of 144,700 by 2045. Demand for public facilities and services is anticipated to increase as the City's population grows. The City's current sphere supports the present and probable need for public facilities and services.

---

<sup>1</sup> For LAFCo purposes, an unincorporated island is: "Surrounded or substantially surrounded by the city to which the annexation is proposed or by that city and a county boundary or the Pacific Ocean if the territory to be annexed is substantially developed or developing, is not prime agricultural land as defined in Section 56064, is designated for urban growth by the general plan of the annexing city, and is not within the sphere of influence of another city" (Government Code Section 56375(a)(4)(A)).

- (3) *The present capacity of public facilities and adequacy of public services that the agency provides or is authorized to provide. (Section 56425(e)(3))*

The City provides a range of public facilities and services, both directly and by contract, in support of its population. Based on a review of City documents and consultation with City staff, it appears that, consistent with the evaluation provided in the MSR accepted by the Commission on February 21, 2018: (1) the City has the ability to continue to provide public facilities and services at existing levels within its service area and sphere of influence, and (2) additional demands on the City are not expected to adversely impact the present capacity of public services and adequacy of public services provided by the City.

- (4) *The existence of any social or economic communities of interest in the area if the commission determines that they are relevant to the agency. (Section 56425(e)(4))*

The City's sphere of influence does not include territory that is known to be a community of interest. No disadvantaged unincorporated communities (defined in Government Code Section 56033.5 as communities having an annual median household income that is less than 80 percent of the statewide annual median household income) are located within or contiguous to the City's sphere of influence.

- (5) *For an update of a sphere of influence of a city or special district that provides public facilities or services related to sewers, municipal and industrial water, or structural fire protection. . . the present and probable need for those public facilities and services of any disadvantaged unincorporated communities within the existing sphere of influence. (Section 56425(e)(5))*

The review of the City's sphere of influence is not considered an update (i.e., a modification) to the sphere. Additionally, no disadvantaged unincorporated communities are located within the City's sphere of influence.

### *Notice of Public Hearing*

This matter has been noticed as a public hearing pursuant to Government Code Section 56427. Additionally, all affected agencies have been notified of the public hearing.

### Attachments:

1. Existing Sphere of Influence Map for the City of Thousand Oaks
2. LAFCo 23-22S Resolution

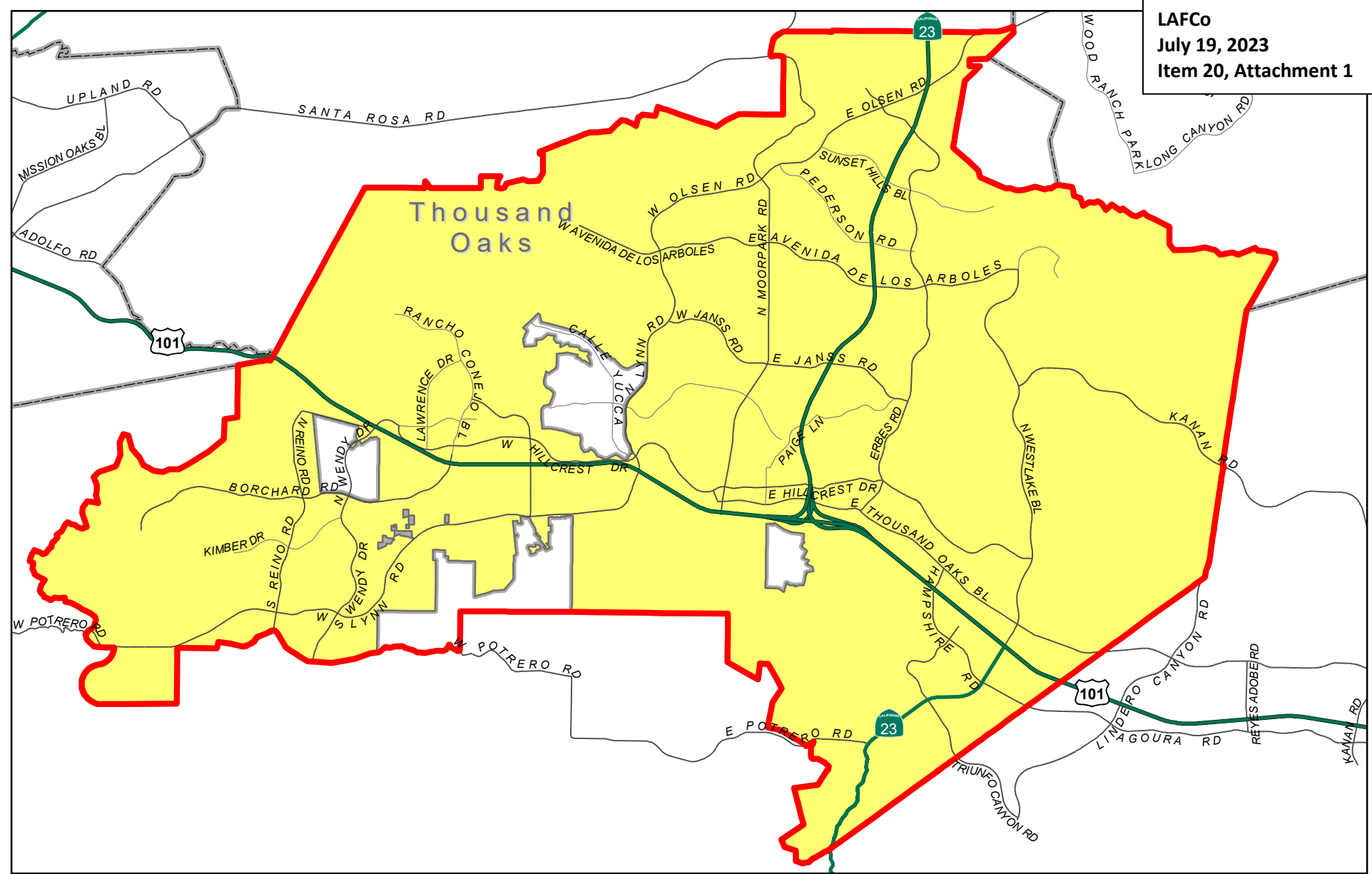
LAFCo makes every effort to offer legible map files with the online and printed versions of our reports; however, occasionally the need to reduce oversize original maps and/or other technological/software factors can compromise readability. Original maps are available for viewing at the LAFCo office by request.

Staff Report – Sphere of Influence Review

LAFCo 23-22S – City of Thousand Oaks

July 19, 2023

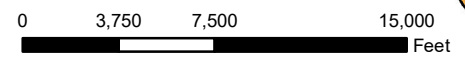
Page 4 of 4



## City of Thousand Oaks

Current as of September 13, 2021

Prepared by County of Ventura - IT Services Department - GIS Division  
 State Plane Coordinate System California Zone V - NAD 83  
 This map was compiled from records and computations



- Legend**
- Thousand Oaks Sphere of Influence  
37,356.19 acres
  - Thousand Oaks City Boundary  
35,485.43 acres



**LAFCO 23-22S**

**RESOLUTION OF THE VENTURA LOCAL AGENCY FORMATION  
COMMISSION MAKING DETERMINATIONS AND REVIEWING  
THE SPHERE OF INFLUENCE FOR THE CITY OF THOUSAND OAKS**

WHEREAS, Government Code § 56425 et seq. requires the Local Agency Formation Commission (LAFCo or Commission) to develop and determine the sphere of influence of each local governmental agency within the County; and

WHEREAS, Government Code § 56425(g) requires that on or before January 1, 2008, and every five years thereafter, the Commission shall, as necessary, review and update the sphere of influence of each city and special district; and

WHEREAS, the Commission updated the sphere of influence for the City of Thousand Oaks (City) in 2007, and reviewed the sphere in 2012 and 2018; and

WHEREAS, the Commission most recently accepted a Municipal Service Review report for the City on February 21, 2018; and

WHEREAS, the Commission desires to review the sphere of influence for the City; and

WHEREAS, no change in regulation, land use, or development will occur as a result of reviewing the sphere of influence for the City; and

WHEREAS, at the times and in the manner required by law, the LAFCo Executive Officer gave notice of the consideration of this item by the Commission; and

WHEREAS, the sphere of influence review item was duly considered at a public hearing on July 19, 2023, as specified in the notice of hearing; and

WHEREAS, the Commission heard, discussed, and considered all oral and written testimony for and against the sphere of influence review including, but not limited to, the LAFCo Staff Report dated July 19, 2023, and recommendations.

NOW, THEREFORE, BE IT RESOLVED, DETERMINED, AND ORDERED by the Commission as follows:

- (1) The LAFCo Staff Report dated July 19, 2023, and recommended review of the sphere of influence for the City are adopted; and

(2) The subject sphere of influence review is assigned the following distinctive short form designation:

**LAFCO 23-22S CITY OF THOUSAND OAKS SPHERE OF INFLUENCE REVIEW;** and

(3) An update (modification) to the sphere of influence for the City is not necessary; and

(4) The Commission has considered the criteria set forth in Government Code § 56425(e) and determines as follows:

**a. *The present and planned land uses in the area, including agricultural and open-space lands. (§ 56425(e)(1))***

The City's sphere of influence includes residential, commercial, industrial, public, and open space uses, as reflected on the land use map of the City's General Plan. The City's current sphere supports the present and planned land uses established by the City's General Plan. The City's sphere includes several unincorporated islands.<sup>1</sup> These include three larger communities (i.e., Casa Conejo, Lynn Ranch, and Rolling Oaks) and four smaller islands in the Kelley Estates area that consist of existing developed areas. Additionally, the unincorporated community of Ventu Park is substantially surrounded by the City. This area is provided municipal services by the City, and LAFCo routinely authorizes additional wastewater and/or water service by the City to parcels within this area by means of extraterritorial service agreements (i.e., out-of-agency service agreements, otherwise known as OASAs). Additionally, the City's sphere of influence contains area south of the City that is designated by the City for parks, golf course, open space, and residential uses, and includes land designated as undevelopable. Land within this area primarily includes developed residential parcels in the Ventu Park area closest to the existing City boundary, sparsely-populated areas along White Stallion Road (accessed from the Hidden Valley community along Potrero Road), and open space.

---

<sup>1</sup> For LAFCo purposes, an unincorporated island is: "Surrounded or substantially surrounded by the city to which the annexation is proposed or by that city and a county boundary or the Pacific Ocean if the territory to be annexed is substantially developed or developing, is not prime agricultural land as defined in Section 56064, is designated for urban growth by the general plan of the annexing city, and is not within the sphere of influence of another city" (Government Code Section 56375(a)(4)(A)).

**b. *The present and probable need for public facilities and services in the area.***

**(§ 56425(e)(2))**

The City provides a variety of public facilities and services within its service area, and there are no anticipated changes in the type of public facilities and services that it provides. Based on the land use designations and characteristics of the land contained within the City's sphere, no changes to existing and planned land uses are expected. The U.S. Census Bureau estimated the City's population in 2021 to be 125,754. According to the *2020-2045 Regional Transportation Plan/Sustainable Communities Strategy (RTP/SCS)*, adopted by the Southern California Association of Governments in 2020, the City is anticipated to experience growth resulting in a population of 144,700 by 2045. Demand for public facilities and services is anticipated to increase as the City's population grows. The City's current sphere supports the present and probable need for public facilities and services.

**c. *The present capacity of public facilities and adequacy of public services that the agency provides or is authorized to provide.*** (§ 56425(e)(3))

The City provides a range of public facilities and services, both directly and by contract, in support of its population. Based on a review of City documents and consultation with City staff, it appears that, consistent with the evaluation provided in the MSR accepted by the Commission on February 21, 2018: (1) the City has the ability to continue to provide public facilities and services at existing levels within its service area and sphere of influence, and (2) additional demands on the City are not expected to adversely impact the present capacity of public services and adequacy of public services provided by the City.

**d. *The existence of any social or economic communities of interest in the area if the commission determines that they are relevant to the agency.*** (§ 56425(e)(4))

The City's sphere of influence does not include territory that is known to be a community of interest. No disadvantaged unincorporated communities (defined in Government Code Section 56033.5 as communities having an annual median household income that is less than 80 percent of the statewide annual median



household income) are located within or contiguous to the City's sphere of influence.

- e. For an update of a sphere of influence of a city or special district that provides public facilities or services related to sewers, municipal and industrial water, or structural fire protection. . . the present and probable need for those public facilities and services of any disadvantaged unincorporated communities within the existing sphere of influence. (§ 56425(e)(5))***

The review of the City's sphere of influence is not considered an update (i.e., a modification) to the sphere. Additionally, no disadvantaged unincorporated communities are located within the City's sphere of influence.

- (5) The sphere of influence for the City is hereby reviewed and is generally depicted in Exhibit A, "City of Thousand Oaks," attached hereto; and
- (6) LAFCo staff is directed to have the official Geographic Information System (GIS) sphere of influence data maintained for the Ventura LAFCo by the Ventura County Information Technology Services Department as the official sphere of influence record for the City updated consistent with this action.

This resolution was adopted on July 19, 2023.

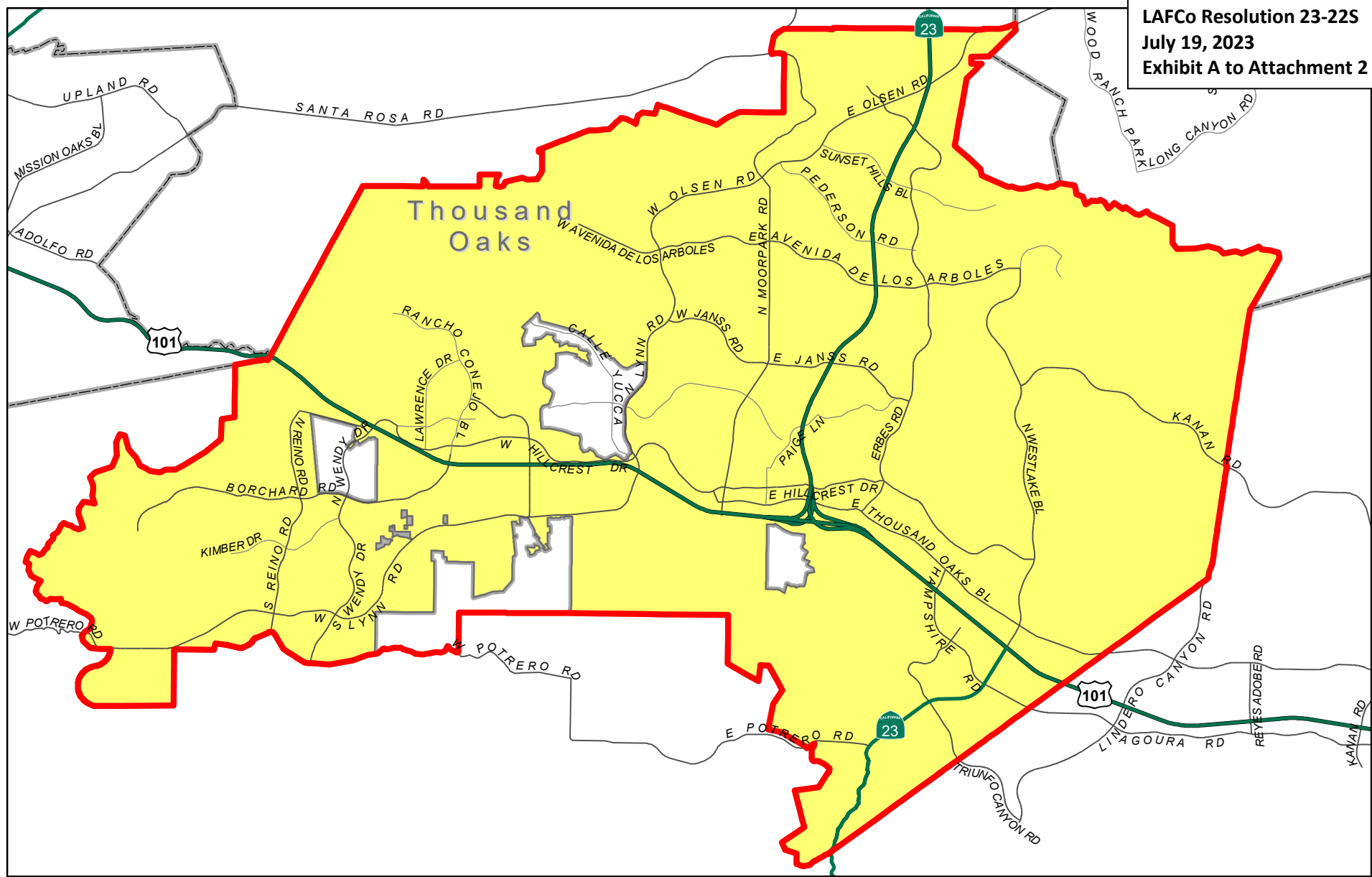
	AYE	NO	ABSTAIN	ABSENT
Commissioner Avila	<input checked="" type="checkbox"/>	<input type="checkbox"/>	<input type="checkbox"/>	<input type="checkbox"/>
Commissioner Crosswhite	<input checked="" type="checkbox"/>	<input type="checkbox"/>	<input type="checkbox"/>	<input type="checkbox"/>
Commissioner Gorell	<input type="checkbox"/>	<input type="checkbox"/>	<input type="checkbox"/>	<input checked="" type="checkbox"/>
Commissioner Parvin	<input checked="" type="checkbox"/>	<input type="checkbox"/>	<input type="checkbox"/>	<input type="checkbox"/>
Commissioner Richards	<input checked="" type="checkbox"/>	<input type="checkbox"/>	<input type="checkbox"/>	<input type="checkbox"/>
Commissioner Rooney	<input type="checkbox"/>	<input type="checkbox"/>	<input type="checkbox"/>	<input checked="" type="checkbox"/>
Commissioner Zaragoza	<input checked="" type="checkbox"/>	<input type="checkbox"/>	<input type="checkbox"/>	<input type="checkbox"/>
Alt. Commissioner Hasan	<input checked="" type="checkbox"/>	<input type="checkbox"/>	<input type="checkbox"/>	<input type="checkbox"/>
Alt. Commissioner LaVere	<input type="checkbox"/>	<input type="checkbox"/>	<input type="checkbox"/>	<input type="checkbox"/>
Alt. Commissioner Ross	<input type="checkbox"/>	<input type="checkbox"/>	<input type="checkbox"/>	<input type="checkbox"/>
Alt. Commissioner Santangelo	<input type="checkbox"/>	<input type="checkbox"/>	<input type="checkbox"/>	<input type="checkbox"/>

7-19-23  
Date

Pat Richards  
Chair, Ventura Local Agency Formation Commission

Attachment: Exhibit A

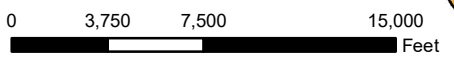
c: City of Thousand Oaks  
Ventura County Information Technology Services Department



# City of Thousand Oaks

## Current as of September 13, 2021

Prepared by County of Ventura - IT Services Department - GIS Division  
 State Plane Coordinate System California Zone V - NAD 83  
 This map was compiled from records and computations



- Legend**
- Thousand Oaks Sphere of Influence  
37,356.19 acres
  - Thousand Oaks City Boundary  
35,485.43 acres

