

Ventura Local Agency Formation Commission

Ventura County Waterworks District No. 19

Municipal Service Review



Prepared By:
Ventura Local Agency Formation Commission
801 S. Victoria Avenue, Suite 301
Ventura, CA 93003
Accepted by the Commission on May 18, 2022

Table of Contents

| | |
|--|----|
| Introduction | 1 |
| Maps..... | 3 |
| Profile | 4 |
| Growth and Population Projections..... | 6 |
| Review of Municipal Services..... | 7 |
| Sphere of Influence..... | 12 |
| Written Determinations..... | 13 |

Introduction

Purpose of the Municipal Service Review

Local Agency Formation Commissions (LAFCo) exist in each county in California and were formed for the purpose of administering state law and local policies relating to the establishment and revision of local government boundaries. According to the Cortese-Knox-Hertzberg Local Government Reorganization Act of 2000 (California Government Code § 56000 et seq.), LAFCo's purposes are to:

- discourage urban sprawl;
- preserve open space and prime agricultural land;
- ensure efficient provision of government services; and
- encourage the orderly formation and development of local agencies.

To achieve these purposes, LAFCos are responsible for coordinating logical and timely changes in local government boundaries (such as annexations), conducting special studies that identify ways to reorganize and streamline governmental structure, and determining a sphere of influence for each city and special district over which they have authority.

A **sphere of influence** is a plan for the probable physical boundaries and service area of a local agency, as determined by LAFCo (Government Code § 56076). Beginning in 2001, each LAFCo was required to review, and as necessary, update the sphere of each city and special district on or before January 1, 2008, and every five years thereafter (Government Code § 56425(g)). Government Code § 56430(a) provides that in order to determine or update a sphere of influence, LAFCo shall prepare a **Municipal Service Review (MSR)** and make written determinations relating to the following seven factors:

1. Growth and population projections for the affected area.
2. The location and characteristics of any disadvantaged unincorporated communities within or contiguous to the sphere of influence.
3. Present and planned capacity of public facilities, adequacy of public services, and infrastructure needs or deficiencies including needs or deficiencies related to sewers, municipal and industrial water, and structural fire protection in any disadvantaged, unincorporated communities within or contiguous to the sphere of influence.
4. Financial ability of agencies to provide services.
5. Status of, and opportunities for, shared facilities.
6. Accountability for community service needs, including governmental structure and operational efficiencies.
7. Any other matter related to effective or efficient service delivery, as required by Commission policy.

MSRs are not prepared for counties, but are prepared for special districts including those governed by a county Board of Supervisors. Additionally, while LAFCos are authorized to prepare studies relating to their role as boundary agencies, they have no investigative authority.

LAFCo staff prepared this MSR for the Ventura County Waterworks District No. 19 (District or VCWD 19) using information obtained from multiple sources, including, but not limited to:

- **MSR Questionnaire:** A questionnaire supplied by LAFCo elicited general information about the District (e.g., contact information, governing body, financial information), as well as service-specific data;
- **Budget:** The adopted budget provided information regarding services and funding levels;
- **General Plan:** Ventura County General Plan provided information regarding land use, populations, and service levels;
- **District Documents:** Various District documents provided supplementary information relating to service provision;
- **Historical MSR:** The 2004 MSR provided certain data that remain relevant and accurate for inclusion in the current MSR;
- **District Website:** The District's website provided supplementary and clarifying information; and
- **District Staff:** District staff provided supplementary and clarifying information.

Organization of the MSR

This report is organized into several sections, as follows:

- **Maps:** A general location map and the official LAFCo map of the District;
- **Profile:** Summary profile of information about the District, including contact information, governing body, summary financial information, and staffing levels;
- **Growth and Population Projections:** Details of past, current, and projected population for the District;
- **Review of Municipal Services:** Discussion of the municipal services that the District provides;
- **Sphere of Influence:** Discussion of the existing sphere of influence of the District and potential modifications to the sphere; and
- **Written Determinations:** Recommended determinations for each of the seven mandatory factors for the District.

The Commission's acceptance of the MSR and adoption of written determinations will be memorialized through the adoption of a resolution that addresses each of the seven mandatory factors based on the Written Determinations section of the MSR.

Maps

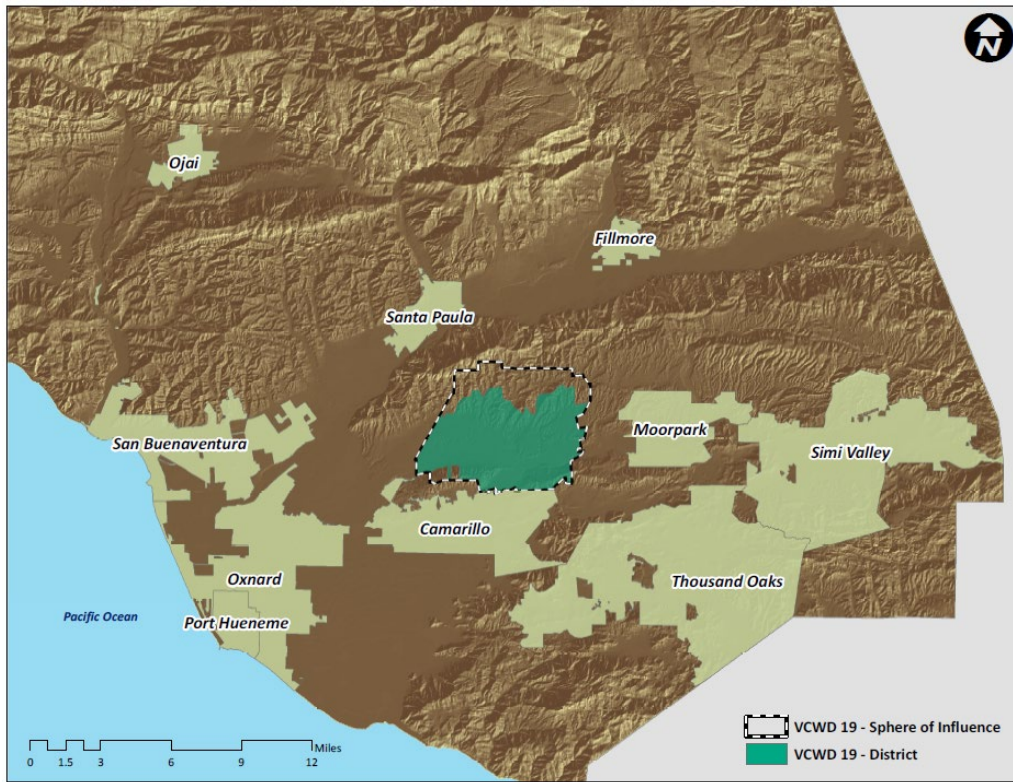


Figure 1: Location Map for Ventura County Waterworks District No. 19

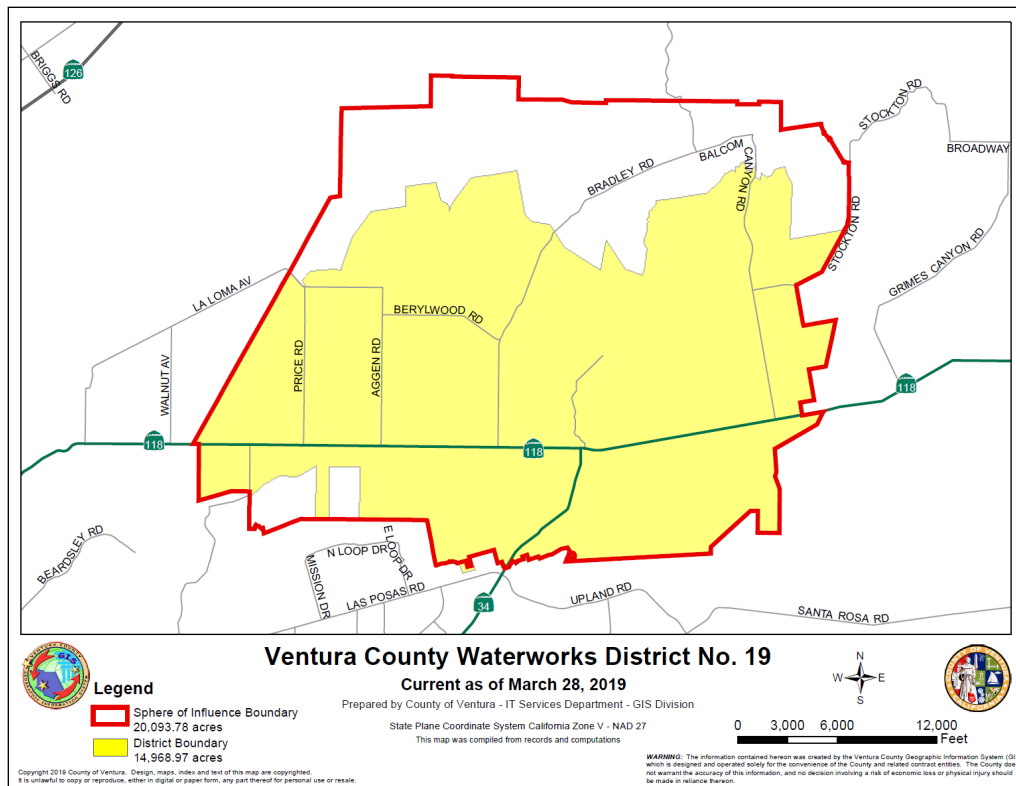


Figure 2: Official LAFCo Map

Profile

Ventura County Waterworks District No. 19, a dependent district of the County of Ventura, was formed on November 4, 1980. It provides potable water service, including all related administrative functions, to customers in the unincorporated community of Somis and surrounding areas, generally north of the City of Camarillo. VCWD 19 provides services through the Water and Sanitation Department of the Ventura County Public Works Agency (VCPWA).

The mission of the Water and Sanitation Department of the VCPWA is provided as follows:

To deliver efficient, responsive and cost effective public works services that protect and enhance the safety, health and quality of life in Ventura County.

Contact Information

| | |
|------------------|--|
| District Manager | Joseph Pope |
| District Office | 6767 Spring Road, Moorpark, CA 93020 |
| Mailing Address | P.O. Box 250, Moorpark, CA 93020-0250 |
| Phone Number | (805) 378-3000 |
| Website | pwa.vcpwpublicworks.org/wsd |
| E-mail Address | joseph.pope@ventura.org |

Governance Information

| | |
|--------------------|---|
| Formation Date | November 4, 1980 |
| Legal Authority | <u>Water Code Section 55000</u> (County Waterworks District Law) |
| Type of District | Dependent |
| Board of Directors | Five members. Board of Directors consists of the Ventura County Board of Supervisors. Elected by voting district to staggered, four-year terms of office (elections held in even-numbered years). |
| Board Meetings | <u>Tuesdays as scheduled</u> , beginning at 8:30 a.m., in the Board of Supervisors Hearing Room located at 800 S. Victoria Avenue, Ventura, CA 93009. Webcast live on the County's website, and available for viewing anytime on the County's website. |

Services Provided

VCWD 19 is authorized to provide potable water service.

| Population and Area Information | | |
|---------------------------------|--------------------------------|----------------------------|
| | <i>Population</i> ¹ | <i>Area (square miles)</i> |
| Jurisdictional Area | 3,179 | 23.4 |
| Sphere of Influence Area | 3,200 | 31.41 |

| Staffing – Full Time Equivalent Positions ² | | | |
|--|----------------------|-------------|-------|
| Executive/Management | Professional/Support | Operational | Total |
| 8 | 16 | 36 | 60 |

| Revenues | Expenditures |
|------------------------------|---|
| Primary Revenue Sources | Primary Expenses |
| Charges for Services | Fixed Assets |
| Other Financing Sources | Services and Supplies |
| Miscellaneous Revenues | Other Charges |
| FY 2021-22 Revenues (Budget) | FY 2021-22 Expenditures (Budget) ³ |
| \$ 8,543,000 | \$ 8,339,500 |

| Public Agencies with Overlapping Jurisdiction | |
|--|---|
| Calleguas Municipal Water District | Ventura County Air Pollution Control District |
| Camarillo Health Care District | Ventura County Fire Protection District |
| Camarillo Sanitary District | Ventura County Resource Conservation District |
| City of Camarillo | Ventura County Service Area No. 14 |
| Fox Canyon Groundwater Management Agency | Ventura County Service Area No. 32 |
| Gold Coast Transit District | Ventura County Transportation Commission |
| Metropolitan Water District of Southern California | Ventura County Watershed Protection District |
| Pleasant Valley Recreation and Park District | Ventura County Waterworks District No. 19 |
| United Water Conservation District | Ventura Regional Sanitation District |

¹ Source: Population includes 1,429 within the Somis Census Designated Place (based on 2020 U.S. Census Bureau data) plus approximately 1,750 within the surrounding area within the jurisdiction of VCWD 19.

² The District is staffed by the Ventura County Water and Sanitation Department (VCWSD or Department). The duties associated with each of the positions within the VCWSD involves all of the projects and facilities managed by the VCWSD, including those associated with the District. Therefore, the number of employees identified above does not reflect full-time positions assigned to the District.

³ VCWD 19 staff (i.e., County staff) indicates that the budgeted net gain is due to capital improvement projects and essential operating costs being estimated to be \$203,500 lower than estimated revenues for Fiscal Year 2021-22. The District has an unrestricted net position totaling \$1,192,466 for the year ending June 30, 2021.

Growth and Population Projections

LAFCo is required to project the growth and population for the affected area (Government Code § 56430(a)(1)).

The population of the District includes 1,429 within the Somis Census Designated Place (based on 2020 U.S. Census Bureau data) plus approximately 1,750 within the surrounding area of VCWD 19, for a total of approximately 3,179 residents. The sphere of influence of the District is estimated to have a slightly higher population (approximately 3,200). In February 2021, the County approved a development project (i.e., the “Somis Ranch Farmworker Housing Project”) that accommodates the construction of 360 dwellings within the District’s jurisdictional area and will likely result in the addition of at least 1,000 residents within the District.

Review of Municipal Services

The review of the District's services is based on provisions of state law which require LAFCo to make determinations regarding the present and planned capacity of public facilities, the adequacy of public services, infrastructure needs and deficiencies, and the District's financial ability to provide these services (Government Code § 56430(a)(3)).

Potable Water Services

Service Area and Distribution System

The District provides retail water service to 1,085 customers (818 municipal/industrial customers and 267 agricultural customers) within the unincorporated community of Somis (immediately northeast of and contiguous to the City of Camarillo). The District is responsible for administrative, billing, customer service, maintenance, operation, design, construction and inspection, laboratory, and regulatory compliance services that support the water service within its jurisdiction. The District's water sources include: (1) imported water from the Calleguas Municipal Water District (CMWD) supplied through the State Water Project (which is occasionally supplemented with water from the Colorado River Aqueduct),⁴ and (2) groundwater from the Las Posas Valley Basin through three active wells that are owned and operated by the District.

According to the *Ventura County Waterworks District No. 19 Water Master Plan* (October 31, 2011), the District was formed in 1980 to assume responsibility for water service that was previously provided by the Rancho Las Posas Mutual Water Company within the unincorporated community of Somis. District staff reports that the system it acquired was in disrepair and provided unreliable service to its customers (i.e., frequent service interruptions and poor water quality), which has resulted in the need for the District to expend resources on substantial capital improvement projects to replace outdated and undersized pipeline.

According to District staff, the District's water distribution system consists of three wells, eight reservoirs that can store approximately 3.19 million gallons (MG) of potable water, seven booster pump stations, 15 pressure reducing stations, and approximately 46 miles of water pipeline ranging from 2 inches to 14 inches in diameter. Some of the District's pipelines along Los Angeles Avenue (Highway 118) were installed in between 1927 and 1930 and are in need of replacement.

The District maintains an average storage volume of approximately 2.17 MG; however, it would benefit from increased storage capacity (i.e., reservoirs located at lower elevations that are less reliant on pumping) and the addition of redundant storage to improve reliability. Additionally, an increase in storage capacity would allow for reduced pumping during peak electrical cost times. Future development within the District's service area will likely result in the need for

⁴ State Water Project water and Colorado River Aqueduct water are supplied by the Calleguas Municipal Water District (a wholesaler of the Metropolitan Water District of Southern California).

additional infrastructure to ensure adequate fire flow and emergency water storage for its customers.

The District provides water service to two properties located outside its jurisdictional boundaries but within its sphere of influence, neither of which is contiguous to the District's existing boundaries: (1) Assessor's Parcel Number (APN) 107-0-110-095 is served by a 1-inch meter (service initiated July 15, 2011) and (2) APN 108-0-090-165 is served by one 3-inch meter (service initiated May 7, 1999). Pursuant to Government Code Section 56133, a city or district may provide new or extended services outside its jurisdictional boundary only if it first requests and receives approval from LAFCo, except under limited circumstances (i.e., LAFCo approval is not required for services provided by an agency on or prior to January 1, 2001). The District's service to APN 108-0-090-165 predates the requirement for LAFCo approval. However, service to APN 107-0-110-095 (i.e., a 183-acre property designated by the Ventura County General Plan as *Open Space* and developed with a single-family residence) is unauthorized as LAFCo approval to provide the service would be required and the service provision does not appear to comply with the provisions of Government Code Section 56133.

Water Supply and Demand

The District's water supply consists of 99.7 percent groundwater pumped from local wells, and the remaining is imported water supplied through the CMWD. Pursuant to the *Ventura County Waterworks District No. 19 Water Master Plan* (October 31, 2011), local groundwater is blended with water supplied by CMWD before being delivered to the District's customers, in order to achieve a consistent high quality of water delivered (to dilute naturally occurring groundwater constituents, such as iron and manganese, present in the groundwater) and to provide the most cost-effective service given the high price of imported water; however, the exact proportion of water from each source varies throughout the District's service area based on proximity to each of these water sources.

The *Water Master Plan* states that average demand for the maximum month was 4.73 million gallons per day (MGD) during the period of 2004 through 2008. District staff states that the average daily demand during the same period was 2.88 MGD, and that the current daily average (i.e., over the last five years) is 1.96 MGD (i.e., 2,195 acre-feet per year (AFY)). The District's water conveyance system can accommodate approximately 6,225 gallons per minute (GPM) (10,041 AFY). The *Water Master Plan* estimated the maximum daily demand at 7.19 MGD (8,053 AFY); however, according to District staff, total water demand has decreased significantly to 2,480 AF (in 2018), 2,077 AF (in 2019), 2,131 AF (in 2020), and 2,196 AF (in 2021), with an average of 2,487 AFY over the last 12 years. While anticipated future water use is volatile and highly dependent on agricultural demand (which constitutes approximately 70 percent of demand within the District's service area), demand into the foreseeable future is expected to be approximately 2,200 AFY during normal years, 2,305 AFY during single dry years, and approximately 3,000 AFY during multiple dry years.

Because the District serves fewer than 3,000 customers and less than 3,000 AFY,⁵ it does not qualify as an urban water supplier that is required, every five years, to prepare and adopt an urban water management plan (UWMP) pursuant to the Urban Water Management Planning Act enacted by the California State Legislature in 1983. Therefore, a comprehensive and up-to-date discussion of current and expected water supply and demand, supply reliability, and water shortage contingency planning and conservation efforts is not regularly consolidated into a single report that is easily accessible to the public. While the District's master plan guides its actions related to operation, maintenance, and infrastructure improvements to meet its service needs, the District and its customers would benefit from an update to the master plan to reflect current water supply and demand figures, infrastructure, population, and capital improvement needs, availability of the master plan on the VCPWA's website, and/or formal reporting/updates that are easily accessible to the public.

Imported Water Supply

Over the past three years, the District's imported water averaged approximately 189 AFY, or about 0.3 percent of total water supply. Imported water is blended with groundwater for delivery to all customers, regardless of user type; however, the ratio of blending is a function of proximity of the service to the supply sources.

Groundwater Supply

The District's groundwater supply comes from the East Las Posas Groundwater Basin underlying the District's service area, which is pumped from the District's three active wells (Well No. 2 (approximately 26 percent), Well No. 3 (approximately 7 percent), and Well No. 4 (approximately 31 percent)). A map of the underlying groundwater basins is provided below in Figure 3.

⁵ During the last 12 years, demand within the District once exceeded 3,000 AF when it delivered 3,015 AF in 2013. Unless the District establishes a pattern of demand exceeding 3,000 AFY, it does not appear that preparation of a UWMP is necessary.

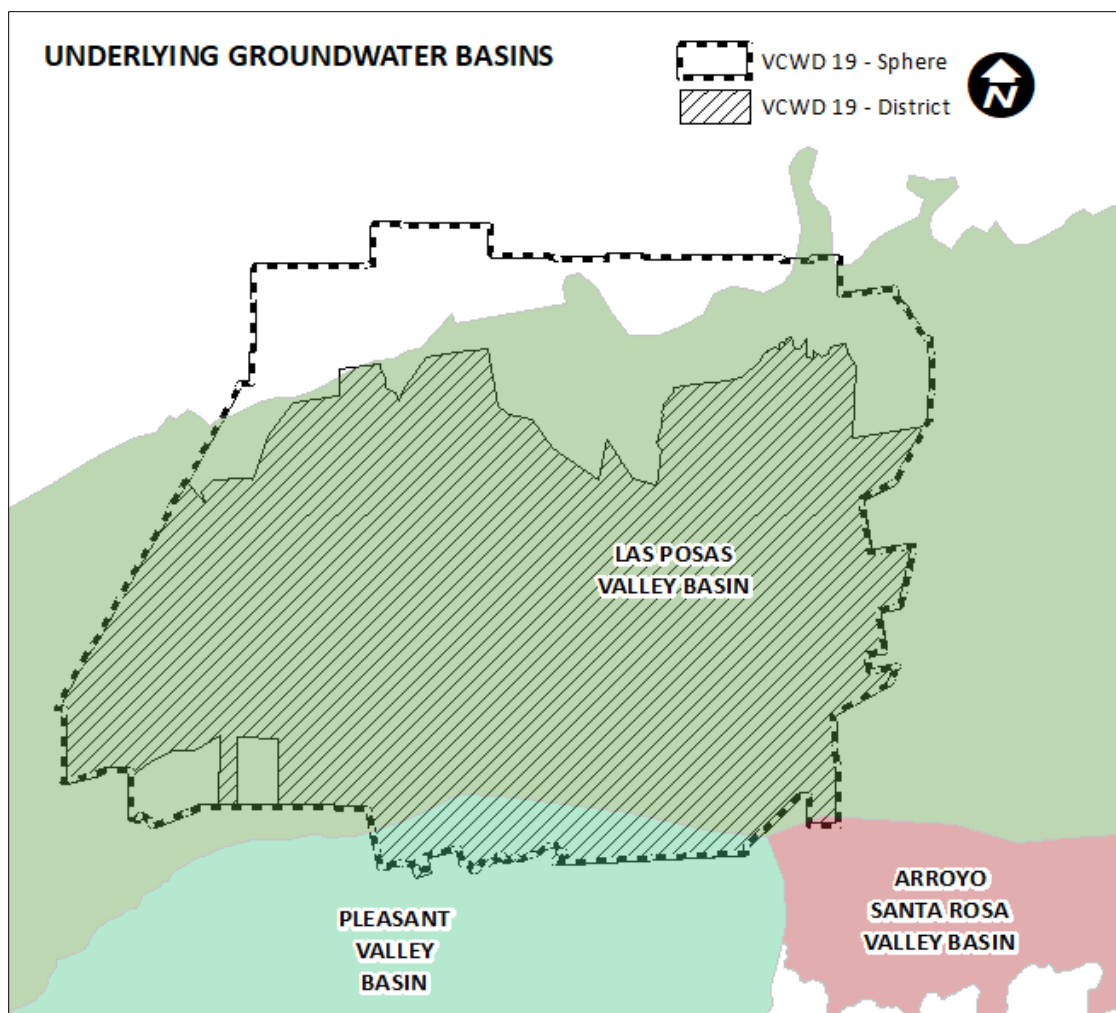


Figure 3: Underlying Groundwater Basins
 (Source: California Department of Water Resources, 2019)

The District’s groundwater extraction volume is controlled by the Fox Canyon Groundwater Management Agency (FCGMA), which sets allocation limits based on safe yield of the basin and consistent with the purpose of the Groundwater Sustainability Plan (GSP) for the Las Posas Valley Basin (December 2019). The FCGMA Board of Directors adopted Emergency Ordinance E in 2014 in response to severe drought conditions, declining water levels, and seawater intrusion, and imposed 20-percent reductions on groundwater extractions. Under the ordinance, VCWD 19’s extraction allocation was 1,844 AFY, and the District pumped 1,843 AF, 1,574 AF, and 1,784 AF during the three years it was subject to that allocation. In 2019, the FCGMA adopted a new ordinance to establish a groundwater extraction allocation system for the Las Posas Valley Basin in support of long-term groundwater sustainability efforts, effective October 1, 2021, until such time as the adjudication of the basin is completed, replacing the allocations established through Emergency Ordinance E. The District’s current allocation is 2,305 AFY, and it produced 1,866 AF in 2020 and 2,187 AF in 2021. The FCGMA will establish the safe yield and resulting allocation to the District at 5-year intervals, in compliance with the GSP.

The District chlorinates extracted groundwater and, in the case of water extracted through Well No. 4 is treated for high iron and manganese before it is released into the potable water distribution system. The CMWD's aquifer storage and recovery program (which stores surplus water underground for later use) allows groundwater yield to be maximized and increases water supplies to ensure that its customers, including the District, are able to meet the demand of their customers.

Capital Improvement Projects

In addition to routine infrastructure maintenance activities, the District has several planned capital improvements including: (1) Well No. 2 treatment to filter iron and manganese from the water, which is currently underway (\$3.137 million to be funded by grants, service costs, and special fees, (2) replacements of aging pipelines within the CalTrans right-of-way (\$2.5 million to be funded by grants and service revenues); (3) 538 Reservoir Replacement (\$1 million projected funding by development, rates and grants); (4) 538 Pump Station Generator (\$300,000, projected funding by rates and grants), and (5) Bradley Pump Station installation for Greentree Reservoir (\$1 million, projected funding by rates and grants).

Water Conservation Measures and Efforts

The Ventura County Waterworks Districts Rules and Regulations (R&Rs) were revised and approved on September 14, 2021, per Resolution No. 21-126. The updated R&Rs outline Shortage Levels 1 through 6 that are imposed when water supply is reduced. For example, a Shortage Level 1 and 2 are imposed when the District expands public information asking for voluntary water restrictions. Shortage Level 3 and 4 are mandatory and prohibited measures imposed with noncompliance penalties. Shortage Level 5 is imposed when the District restriction outside irrigation with enforcement. Shortage Level 6 is imposed when the District demands reduction measures such as no new potable water services or annexations. The District's ongoing customer outreach program includes reminders for voluntary water conservation and information regarding Metropolitan Water District of Southern California's offers.

Sphere of Influence

There have been no changes to the District's service area that would require alterations to its sphere of influence boundary, and no changes are anticipated in the foreseeable future.

Written Determinations

The Commission is required to prepare a written statement of its determinations with respect to each of the subject areas provided below (Government Code § 56430(a)).

1. Growth and population projections for the affected area

- The population of the District includes 1,429 within the Somis Census Designated Place (based on 2020 U.S. Census Bureau data) plus approximately 1,750 within the surrounding area of VCWD 19, for a total of approximately 3,179 residents. The sphere of influence of the District is estimated to have a slightly higher population (approximately 3,200). In February 2021, the County approved a development project (i.e., the “Somis Ranch Farmworker Housing Project”) that accommodates the construction of 360 dwellings within the District’s jurisdictional area and will likely result in the addition of at least 1,000 residents within the District.

2. The location and characteristics of any disadvantaged unincorporated communities within or contiguous to the sphere of influence

- A disadvantaged unincorporated community is defined as a community with an annual median household income that is less than 80 percent of the statewide annual median household income (Government Code § 56033.5). No disadvantaged unincorporated communities are located within or contiguous to the District’s sphere of influence. According to Ventura LAFCo Commissioner’s Handbook Section 3.2.5, Ventura LAFCo has identified Nyeland Acres (within the City of Oxnard’s sphere of influence to the north of the city) and Saticoy (within the City of San Buenaventura’s sphere of influence to the east of the city) as disadvantaged unincorporated communities.

3. Present and planned capacity of public facilities, adequacy of public services, and infrastructure needs or deficiencies

Water services:

- VCWD 19 operates a potable water system that provides domestic water service to 1,085 municipal/industrial and agricultural customers within the unincorporated community of Somis.
- The District’s water distribution system consists of three wells, eight reservoirs, seven booster pump stations, 15 pressure reducing stations, and approximately 46 miles of water pipeline. Existing infrastructure appears to be adequate to serve the District’s customers.
- VCWD 19’s water sources include imported water from the Calleguas Municipal Water District (CMWD) and groundwater from the Las Posas Valley Basin (approximately 99.7 percent) through three active wells owned and operated by the District.
- The District has demonstrated that it has the capacity to provide additional service and facilities, as needed.

- The District maintains an average storage volume of approximately 2.17 million gallons (MG); however, it would benefit from increased storage capacity (i.e., reservoirs located at lower elevations that are less reliant on pumping) and the addition of redundant storage to improve reliability.
- Total water demand within the District over the last four years was 2,480 acre-feet (AF) in 2018, 2,077 AF in 2019, 2,131 AF in 2020, and 2,196 AF in 2021, with an average of 2,487 AFY over the last 12 years. District staff anticipates demand of 2,200 AFY during normal years, 2,305 AFY during single-dry years, and 3,000 AFY during multiple-dry years. The District should consider formalizing its water use projections for normal years, single-dry years, and multiple-dry years.
- Over the past three years, the District's imported water averaged approximately 189 AFY of total water supply. Imported water is blended with groundwater for delivery to all customers, regardless of user type; however, the ratio of blending is a function of proximity of the service to the supply sources.
- The District's groundwater supply comes from the East Las Posas Groundwater Basin underlying the District's service area, which is pumped from the District's three active wells.
- The District's extraction allocation, controlled by the Fox Canyon Groundwater Management Agency (FCGMA) was established in 2020 at 2,305 AFY. In 2020, it produced 1,866 AF, and in 2021, it produced 2,187 AF.
- The District has several planned capital improvements, including improvements to Well No. 2, pipeline replacements, replacement of a reservoir, and the new Bradley Pump Station.
- On January 1, 2022, the District implemented automated meter infrastructure system to allow for better monitoring of leaks and to assist customers in meeting conservation targets.
- The District has a water shortage contingency plan, which is contained within the Ventura County Waterworks Districts Rules and Regulations.
- The District is equipped with emergency generators for the purpose of providing back-up power to its water distribution system.
- The District recently began using a utility management system (i.e., Sedaru), which allows District staff to digitally view its mapped infrastructure as an overlay to the County's GIS data, and assists the District in analyzing its existing services and anticipated needs.
- While the District's 2011 master plan guides its actions related to operation, maintenance, and infrastructure improvements to meet its service needs, the District and its customers would benefit from an update to the master plan to reflect current water supply and demand figures, infrastructure, population, and capital improvement needs, availability of the master plan on the VCPWA's website, and/or formal reporting/updates that are easily accessible to the public.

4. Financial ability of agencies to provide services

- VCWD 19 has a steady stream of revenue through service fees collected from its customers. It has predictable expenses related operation and maintenance services, as well as administrative and management services provided by the County.
- VCWD 19 staff (i.e., County staff) indicates that the budgeted net gain is due to capital improvement projects and essential operating costs being estimated to be \$203,500 lower than estimated revenues for Fiscal Year 2021-22. Unrestricted net position totaled \$1,192,466 for the year ending June 30, 2021. As part of the annual budget process, the water rates are reviewed to determine whether adjustments are needed to accommodate projected expenses. Rate adjustments are considered by the VCWD 19 Board of Directors (i.e., the Ventura County Board of Supervisors) subject to Proposition 218 (which, generally, establishes that new taxes are subject to voter approval). Service charges are collected by VCWD 19 through monthly service bills mailed to customers.
- VCWD 19's established reserves policy December 8, 2020, (Resolution No. 20-144) approved reserve fund targets of 25 percent of operating expenses, 10 percent of operating revenue, and 2 percent of net assets. Over the last three years, VCWD 19 has maintained reserves ranging between 13 percent and 14 percent of total revenue, meeting the Board approved reserve targets.
- VCWD 19 has a five-year (FY 2022-26) capital improvement plan consisting of \$14.7 million, which is projected to be funded through service charges, grants, and loans.
- VCWD 19 has long-term debt financing for a term of 23 years through the County of Ventura issuance of revolving credit agreement notes, currently \$2,525,000 as of June 30, 2021, which proceeds were used to pay, in full, VCWD 19's debt obligations with the United States Department of Agriculture.
- Based on the information above, it appears that VCWD 19 can finance the services it currently provides.
- VCWD 19 is independently audited on a regular basis as part of the annual audit of the County. The most recent audit (March 11, 2022) prepared for the County was unqualified. An unqualified report reflects fair and transparent financial statements in compliance with generally accepted accounting principles and statutory requirements.

5. Status of, and opportunities for, shared facilities

- None were identified.

6. Accountability for community service needs, including governmental structure and operational efficiencies

- The District is accountable to its constituents through its elected Board of Directors (i.e., the Ventura County Board of Supervisors), adherence to applicable government code sections, open and accessible meetings, and dissemination of information.
- The District has adapted to the changing needs of public access as a result of the disease caused by the novel coronavirus (COVID-19) pandemic, by providing live internet access and public participation opportunities for its meetings.

- The District achieves operational and management efficiencies by being managed and staffed by the County of Ventura. Additionally, it has arrangements with various service providers. For example, the District receives the following services from the County of Ventura: office space, management, accounting/auditing, legal counsel, real estate, and insurance.
- The District's Water Master Plan was prepared in October 2011 and is not currently planned to be updated.
- The District, through the County of Ventura, is a member of the California Water/Wastewater Agency Response Network WARN (CALWARN) program (which supports and promotes statewide emergency preparedness, disaster response, and mutual assistance processes for public and private water and wastewater utilities in coordination with the State Office of Emergency Services).
- The County Public Works Agency's Water and Sanitation Department maintains a website that contains general information about the District, contact information, a summary of services, and projects recently completed and under construction. The website provides a Spanish translation option. The District could improve its transparency by clarifying that the District is a dependent district that is managed and operated by the County of Ventura, and by posting links to the District's history, mission, enabling legislation, boundary map, summary of facilities, Board of Directors meeting information (agendas, staff reports, minutes, and video recordings), current and historical budgets, studies and reports, most recent municipal service review completed by LAFCo, and the State Controller's "By the Numbers" (agency financial reporting information) and "Public Pay" (employee salary) webpages. Much of this information could likely be provided by means of links to the appropriate webpages of the County's website. Additionally, to improve the public's ability to easily access District information, the utilities pages of the Water and Sanitation Department could be organized to include all District information (e.g., including the Water Master Plan, Water Quality Reports, rates and charges, construction projects, and citizens' advisory committee meetings) into one central location.
- The District is supported by a Citizens' Advisory Committee, which meets in alternating months and serves as a liaison between the community and the District. The Citizens' Advisory Committee reviews staff recommendations regarding annual budgets, water and sanitation rate adjustments, capital improvement projects, annexation issues, new policy items, and other issues related management of the District, and makes recommendations to the Board of Directors.
- District staff was responsive in providing information for this MSR during the requested timeframe.

7. Any other matter related to effective or efficient service delivery, as required by Commission policy

- The Sustainable Groundwater Management Act (SGMA) of 2014 requires the formation of local groundwater sustainability agencies (GSAs) for high- or medium-priority water basins, as determined by the state. GSAs are required to evaluate local water basin conditions and develop groundwater sustainability plans (GSPs). The purpose of a GSP is

to define sustainability for an individual basin and establish a path toward sustainability by 2040 for high-priority basins, and 2042 for medium-priority basins. The Las Posas Basin is listed as a high-priority basin, pursuant to the State Department of Water Resources (DWR). The Fox Canyon Groundwater Management Agency is the GSA for all areas of the Las Posas Basin except for the portion located within the jurisdictional area of the Camrosa Water District. The Fox Canyon Groundwater Management Agency adopted a GSP for the entire Las Posas Basin in December 2019, which was approved by the DWR in January 2022.