



**VENTURA LOCAL AGENCY FORMATION COMMISSION
STAFF REPORT**

Meeting Date: September 20, 2023

TO: LAFCo Commissioners

FROM: Andrea Ozdy, Deputy Executive Officer *Andrea Ozdy*

SUBJECT: Sphere of Influence Review:
LAFCo 23-24S United Water Conservation District

Recommendation:

Adopt Resolution LAFCo 23-24S (Attachment 2) making determinations and reviewing the sphere of influence for the District pursuant to Government Code Section 56425(g), including that a sphere of influence update is not necessary.

District Information:

The United Water Conservation District is an independent special district formed in 1950 that provides a wide range of services, which include operation and management of the Santa Felicia Dam and Lake Piru reservoir along Piru Creek, the Freeman Diversion along the Santa Clara River near Saticoy and related spreading grounds, and all of which are conducted in support of water conservation and groundwater replenishment. The District also provides water service (i.e., primarily wholesale service and a minimal amount of retail service), recreation services at the Lake Piru Recreation Area, and limited wastewater collection services for wastewater facilities at the Lake Piru Recreation Area. A 7-member board of directors governs the District. The District’s sphere of influence covers approximately 212,690 acres (about 332 square miles), and its jurisdictional boundary is coterminous with its sphere (Attachment 1).

Background:

Pursuant to the Cortese-Knox-Hertzberg Local Government Reorganization Act of 2000 (Government Code Section 56000 et seq.), the Commission was required to determine and adopt a sphere of influence (or “sphere”) for each city and special district on or before January 1, 2008. A sphere of influence is defined in Government Code Section 56076 as the probable physical boundary and service area of a local agency, as determined by the Commission. Every

COMMISSIONERS AND STAFF

COUNTY	CITY	DISTRICT	PUBLIC
Jeff Gorell	Jenny Crosswhite, Vice-Chair	Raul Avila	Pat Richards, Chair
Janice S. Parvin <i>Alternate</i>	John C. Zaragoza <i>Alternate</i>	Mary Anne Rooney <i>Alternate</i>	<i>Alternate</i>
Matt LaVere	Susan Santangelo	Mohammed A. Hasan	David J. Ross
Executive Officer Kai Luoma	Deputy Executive Officer Andrea Ozdy	Office Manager/Clerk Richelle Beltran	Legal Counsel Jeffrey Barnes

five years thereafter, the Commission must, as necessary, review and update each sphere of influence (Government Code Section 56425(g)).

In compliance with Government Code Section 56425(g), the Commission accepted municipal service review (MSR) reports for the District in 2003 (related to water services) and 2005 (related to recreation and park services). Both of the MSRs conducted by LAFCo for the District are available on the [LAFCo website](#).

LAFCo's past sphere of influence reviews resulted in no modifications of the sphere in 2006, 2011, and 2016.

Discussion:

Sphere of Influence Evaluation

Based on the current work plan established by the Commission, an evaluation of the District's sphere of influence is to be initiated in 2023. LAFCo staff consulted with District staff to discuss the District's sphere of influence, and to determine: (1) if the District has experienced any changes to its service needs or areas since LAFCo's most recent evaluation of its sphere of influence, and (2) if the District staff anticipates any service changes that would warrant adjustment of the sphere boundaries.

As explained in the analysis below, it appears that the existing sphere of influence boundary continues to reflect the District's current and probable service area, and is justified based on the MSR report provided for the Commission's consideration as part of Agenda Item 11 of the September 20, 2023, meeting. The MSR demonstrates that the District has the ability to provide services at acceptable levels. Therefore, no changes to the sphere of influence for the District are recommended. The sphere of influence review involving no changes is not subject to the California Environmental Quality Act (CEQA) because it "will not result in a direct or reasonably foreseeable indirect physical change in the environment" (CEQA Guidelines Section 15060(c)(2)).

Written Determinations

Government Code Section 56425(e) requires that, in determining the sphere of influence of an agency, the Commission consider and prepare a written statement of its determinations with respect to each of the following:

- (1) *The present and planned land uses in the area, including agricultural and open-space lands.*
(Section 56425(e)(1))

The territory within the District's sphere of influence includes a range of uses, including urban development within several cities (i.e., all of Oxnard, Port Hueneme, Santa Paula, and

Fillmore, the eastern approximately two-thirds of the City of San Buenaventura, and the southern and western areas of the City of Camarillo), as well as unincorporated residential, commercial, rural, agricultural, and open space land surrounding and between these cities. The District's sphere of influence and service area is expected to experience population growth of approximately 28,000 between 2020 and 2040, with most of that growth anticipated to occur within the cities. Based on the land use designations and characteristics of the land contained within the District's sphere, existing land uses are expected to remain unchanged.

(2) *The present and probable need for public facilities and services in the area. (Section 56425(e)(2))*

The District provides a wide range of services, which include operation and management of the Santa Felicia Dam and Lake Piru reservoir along Piru Creek, the Freeman Diversion along the Santa Clara River near Saticoy and related spreading grounds, in support of water conservation and groundwater replenishment. The District also provides water service (i.e., primarily wholesale service and a minimal amount of retail service), recreation services at the Lake Piru Recreation Area, and limited wastewater collection services for wastewater facilities at the Lake Piru Recreation Area. The territory within the District's sphere of influence includes a range of uses, from urban development within several cities (i.e., all of Oxnard, Port Hueneme, Santa Paula, and Fillmore, the eastern approximately two-thirds of the City of San Buenaventura, and the southern and western areas of the City of Camarillo), as well as unincorporated residential, commercial, rural, agricultural, and open space land surrounding and between these cities. The existing need for District services will remain, and additional demand for services is expected as a result of population growth within the District's sphere of influence and jurisdictional area.

(3) *The present capacity of public facilities and adequacy of public services that the agency provides or is authorized to provide. (Section 56425(e)(3))*

The District provides a wide range of services, which include operation and management of the Santa Felicia Dam and Lake Piru reservoir along Piru Creek, the Freeman Diversion along the Santa Clara River near Saticoy and related spreading grounds, in support of water conservation and groundwater replenishment. The District also provides water service (i.e., primarily wholesale service and a minimal amount of retail service), recreation services at the Lake Piru Recreation Area, and limited wastewater collection services for wastewater facilities at the Lake Piru Recreation Area. The territory within the District's sphere of influence includes a range of uses, from urban development within several cities (i.e., all of Oxnard, Port Hueneme, Santa Paula, and Fillmore, the eastern approximately two-thirds of the City of San Buenaventura, and the southern and western areas of the City of Camarillo), as well as unincorporated residential, commercial, rural, agricultural, and open space land surrounding and between these cities. While new residential development projects within the cities are anticipated, based on the evaluation contained in the MSR prepared by LAFCo

on September 20, 2023, the District has the ability to continue to provide services within its jurisdictional area and sphere of influence, and additional demands would not adversely impact the present capacity of public facilities and adequacy of public services that the District provides or is authorized to provide.

- (4) *The existence of any social or economic communities of interest in the area if the commission determines that they are relevant to the agency.* (Section 56425(e)(4))

A disadvantaged unincorporated community is defined as a community with an annual median household income that is less than 80 percent of the statewide annual median household income (Government Code § 56033.5). According to Ventura LAFCo Commissioner's Handbook Section 3.2.5, Ventura LAFCo has identified Nyeland Acres (within the City of Oxnard's sphere of influence to the north of the city), the Piru community, and Saticoy (within the City of San Buenaventura's sphere of influence to the east of the city) as disadvantaged unincorporated communities. The UWCD's sphere of influence (which is coterminous with its jurisdictional area) includes all three disadvantaged unincorporated communities identified by LAFCo.

- (5) *For an update of a sphere of influence of a city or special district that provides public facilities or services related to sewers, municipal and industrial water, or structural fire protection. . . the present and probable need for those public facilities and services of any disadvantaged unincorporated communities within the existing sphere of influence.* (Section 56425(e)(5))

The review of the District's sphere of influence is not considered an update (i.e., a modification) to the sphere.

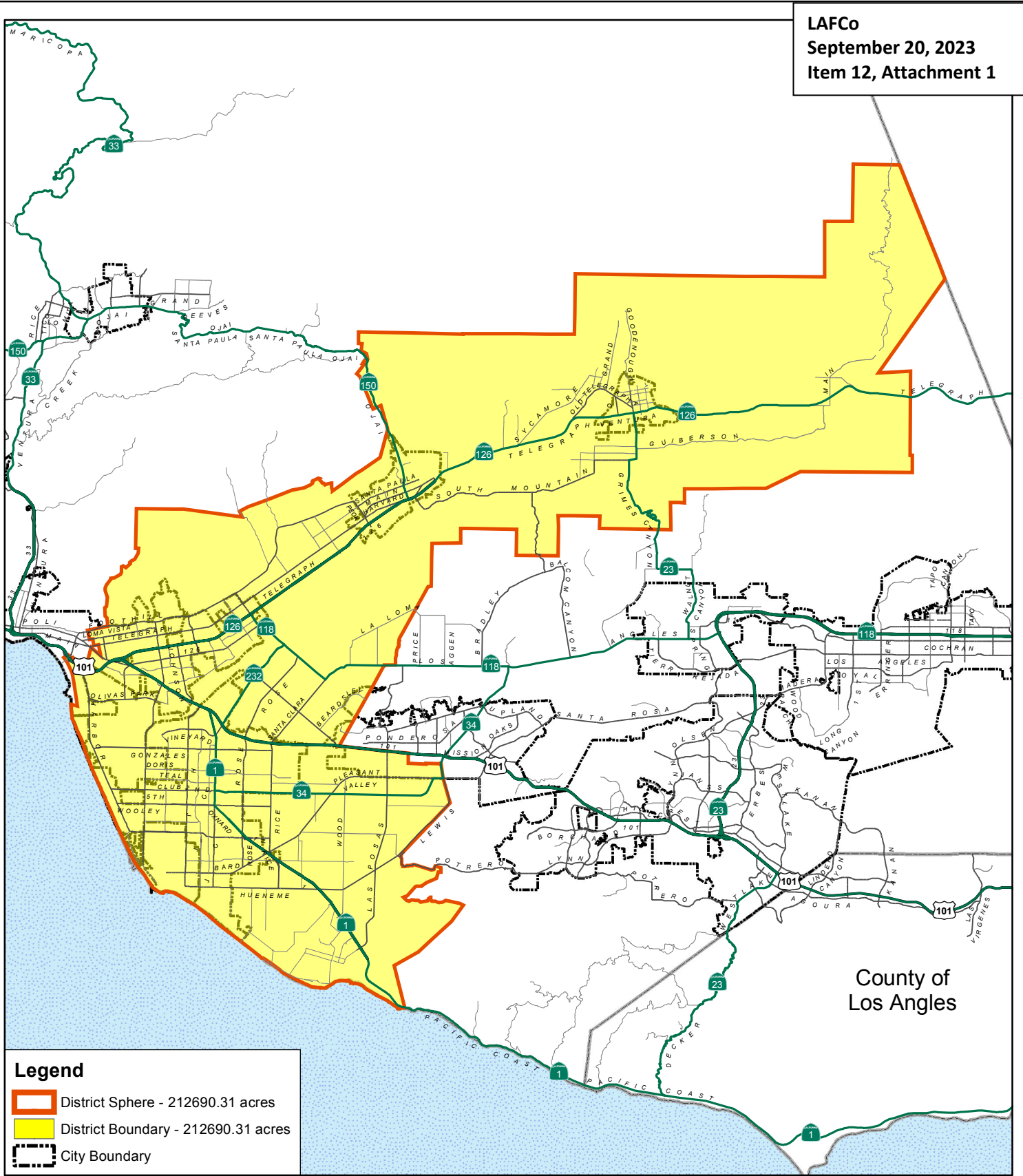
Notice of Public Hearing

This matter has been noticed as a public hearing pursuant to Government Code Section 56427. Additionally, all affected agencies have been notified of the public hearing.




Attachments:

1. Existing Sphere of Influence Map for the United Water Conservation District
2. LAFCo 23-24S Resolution

LAFCo makes every effort to offer legible map files with the online and printed versions of our reports; however, occasionally the need to reduce oversize original maps and/or other technological/software factors can compromise readability. Original maps are available for viewing at the LAFCo office by request.



Legend

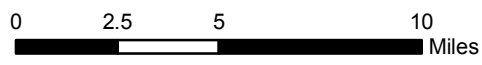
-  District Sphere - 212690.31 acres
-  District Boundary - 212690.31 acres
-  City Boundary

County of
 Los Angeles

United Water Conservation District

Current as of January 20, 2016

Prepared by County of Ventura - Information Systems Department - GIS Division
 State Plane Coordinate System California Zone V - NAD 27
 This map was compiled from records and computations



LAFCO 23-245**RESOLUTION OF THE VENTURA LOCAL AGENCY FORMATION
COMMISSION MAKING DETERMINATIONS AND REVIEWING
THE SPHERE OF INFLUENCE FOR THE UNITED WATER
CONSERVATION DISTRICT**

WHEREAS, Government Code § 56425 et seq. requires the Local Agency Formation Commission (LAFCo or Commission) to develop and determine the sphere of influence of each local governmental agency within the County; and

WHEREAS, Government Code § 56425(g) requires that on or before January 1, 2008, and every five years thereafter, the Commission shall, as necessary, review and update the sphere of influence of each city and special district; and

WHEREAS, the Commission reviewed the sphere of influence for the United Water Conservation District (District) in 2006, 2011, and 2016;

WHEREAS, the Commission most recently accepted a Municipal Service Review (MSR) report for the District on September 20, 2023;

WHEREAS, the Commission desires to review the sphere of influence for the District; and

WHEREAS, no change in regulation, land use, or development will occur as a result of reviewing the sphere of influence for the District; and

WHEREAS, at the times and in the manner required by law, the LAFCo Executive Officer gave notice of the consideration of this item by the Commission; and

WHEREAS, the sphere of influence review item was duly considered at a public hearing on September 20, 2023, as specified in the notice of hearing; and

WHEREAS, the Commission heard, discussed, and considered all oral and written testimony for and against the sphere of influence review including, but not limited to, the LAFCo Staff Report dated September 20, 2023, and recommendations; and

NOW, THEREFORE, BE IT RESOLVED, DETERMINED, AND ORDERED by the Commission as follows:

- (1) The LAFCo Staff Report dated September 20, 2023, and recommended review of the sphere of influence for the District are adopted; and
- (2) The subject sphere of influence review is assigned the following distinctive short form designation:
LAFCo 23-24S UNITED WATER CONSERVATION DISTRICT SPHERE OF INFLUENCE REVIEW; and
- (3) An update (modification) to the sphere of influence for the District is not necessary; and
- (4) The Commission has considered the criteria set forth in Government Code § 56425(e) and determines as follows:

a. *The present and planned land uses in the area, including agricultural and open-space lands. (§ 56425(e)(1))*

The territory within the District's sphere of influence includes a range of uses, including urban development within several cities (i.e., all of Oxnard, Port Hueneme, Santa Paula, and Fillmore, the eastern approximately two-thirds of the City of San Buenaventura, and the southern and western areas of the City of Camarillo), as well as unincorporated residential, commercial, rural, agricultural, and open space land surrounding and between these cities. The District's sphere of influence and service area is expected to experience population growth of approximately 28,000 between 2020 and 2040, with most of that growth anticipated to occur within the cities. Based on the land use designations and characteristics of the land contained within the District's sphere, existing land uses are expected to remain unchanged.

b. *The present and probable need for public facilities and services in the area. (§ 56425(e)(2))*

The District provides a wide range of services, which include operation and management of the Santa Felicia Dam and Lake Piru reservoir along Piru Creek, the Freeman Diversion along the Santa Clara River near Saticoy and related spreading grounds, in support of water conservation and groundwater replenishment. The

District also provides water service (i.e., primarily wholesale service and a minimal amount of retail service), recreation services at the Lake Piru Recreation Area, and limited wastewater collection services for wastewater facilities at the Lake Piru Recreation Area. The territory within the District's sphere of influence includes a range of uses, from urban development within several cities (i.e., all of Oxnard, Port Hueneme, Santa Paula, and Fillmore, the eastern approximately two-thirds of the City of San Buenaventura, and the southern and western areas of the City of Camarillo), as well as unincorporated residential, commercial, rural, agricultural, and open space land surrounding and between these cities. The existing need for District services will remain, and additional demand for services is expected as a result of population growth within the District's sphere of influence and jurisdictional area.

c. *The present capacity of public facilities and adequacy of public services that the agency provides or is authorized to provide. (§ 56425(e)(3))*

The District provides a wide range of services, which include operation and management of the Santa Felicia Dam and Lake Piru reservoir along Piru Creek, the Freeman Diversion along the Santa Clara River near Saticoy and related spreading grounds, in support of water conservation and groundwater replenishment. The District also provides water service (i.e., primarily wholesale service and a minimal amount of retail service), recreation services at the Lake Piru Recreation Area, and limited wastewater collection services for wastewater facilities at the Lake Piru Recreation Area. The territory within the District's sphere of influence includes a range of uses, from urban development within several cities (i.e., all of Oxnard, Port Hueneme, Santa Paula, and Fillmore, the eastern approximately two-thirds of the City of San Buenaventura, and the southern and western areas of the City of Camarillo), as well as unincorporated residential, commercial, rural, agricultural, and open space land surrounding and between these cities. While new residential development projects within the cities are anticipated, based on the evaluation contained in the MSR prepared by LAFCo on September 20, 2023, the District has

the ability to continue to provide services within its jurisdictional area and sphere of influence, and additional demands would not adversely impact the present capacity of public facilities and adequacy of public services that the District provides or is authorized to provide.

d. *The existence of any social or economic communities of interest in the area if the commission determines that they are relevant to the agency. (§ 56425(e)(4))*

A disadvantaged unincorporated community is defined as a community with an annual median household income that is less than 80 percent of the statewide annual median household income (Government Code § 56033.5). According to Ventura LAFCo Commissioner's Handbook Section 3.2.5, Ventura LAFCo has identified Nyeland Acres (within the City of Oxnard's sphere of influence to the north of the city), the Piru community, and Saticoy (within the City of San Buenaventura's sphere of influence to the east of the city) as disadvantaged unincorporated communities. The UWCD's sphere of influence (which is coterminous with its jurisdictional area) includes all three disadvantaged unincorporated communities identified by LAFCo.

e. *For an update of a sphere of influence of a city or special district that provides public facilities or services related to sewers, municipal and industrial water, or structural fire protection. . . the present and probable need for those public facilities and services of any disadvantaged unincorporated communities within the existing sphere of influence. (§ 56425(e)(5))*

The review of the District's sphere of influence is not considered an update (i.e., a modification) to the sphere; therefore, this determination does not apply.

- (5) The sphere of influence for the District is hereby reviewed and is generally depicted in Exhibit A, "United Water Conservation District," attached hereto; and
- (6) LAFCo staff is directed to have the official Geographic Information System (GIS) sphere of influence data maintained for the Ventura LAFCo by the Ventura County Information Technology Services Department as the official sphere of influence record for the District updated consistent with this action.

This resolution was adopted on September 20, 2023.

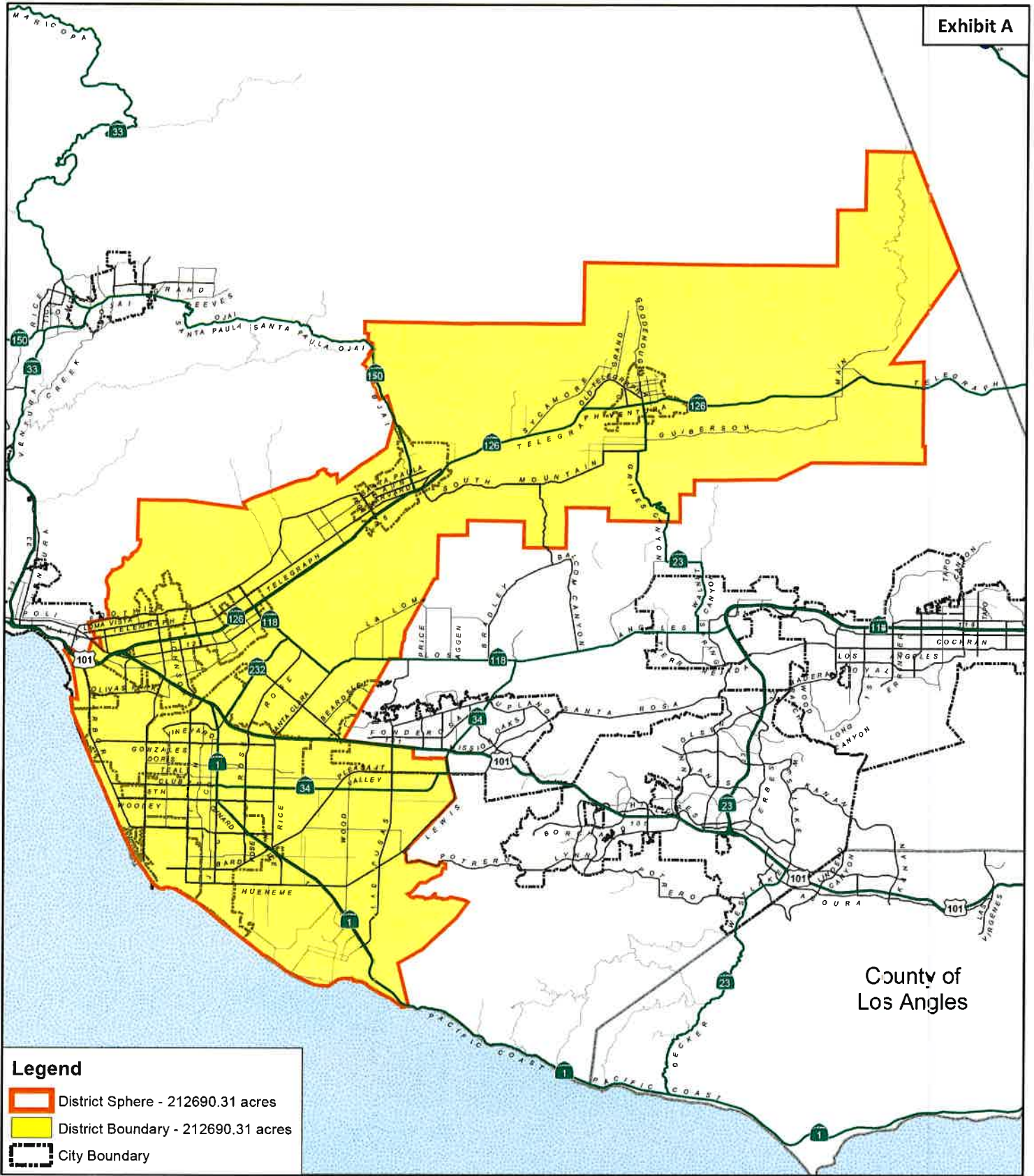
	AYE	NO	ABSTAIN	ABSENT
Commissioner Avila	<input checked="" type="checkbox"/>	<input type="checkbox"/>	<input type="checkbox"/>	<input type="checkbox"/>
Commissioner Crosswhite	<input checked="" type="checkbox"/>	<input type="checkbox"/>	<input type="checkbox"/>	<input type="checkbox"/>
Commissioner Gorell	<input checked="" type="checkbox"/>	<input type="checkbox"/>	<input type="checkbox"/>	<input type="checkbox"/>
Commissioner Parvin	<input checked="" type="checkbox"/>	<input type="checkbox"/>	<input type="checkbox"/>	<input type="checkbox"/>
Commissioner Richards	<input checked="" type="checkbox"/>	<input type="checkbox"/>	<input type="checkbox"/>	<input type="checkbox"/>
Commissioner Rooney	<input checked="" type="checkbox"/>	<input type="checkbox"/>	<input type="checkbox"/>	<input type="checkbox"/>
Commissioner Zaragoza	<input checked="" type="checkbox"/>	<input type="checkbox"/>	<input type="checkbox"/>	<input type="checkbox"/>
Alt. Commissioner Hasan	<input type="checkbox"/>	<input type="checkbox"/>	<input type="checkbox"/>	<input type="checkbox"/>
Alt. Commissioner LaVere	<input type="checkbox"/>	<input type="checkbox"/>	<input type="checkbox"/>	<input type="checkbox"/>
Alt. Commissioner Ross	<input type="checkbox"/>	<input type="checkbox"/>	<input type="checkbox"/>	<input type="checkbox"/>
Alt. Commissioner Santangelo	<input type="checkbox"/>	<input type="checkbox"/>	<input type="checkbox"/>	<input type="checkbox"/>

9-20-23
Date

Joe Richards
Chair, Ventura Local Agency Formation Commission




Attachment: Exhibit A

c: United Water Conservation District
Ventura County Information Technology Services Department



County of Los Angeles

Legend

-  District Sphere - 212690.31 acres
-  District Boundary - 212690.31 acres
-  City Boundary

United Water Conservation District

Current as of January 20, 2016

Prepared by County of Ventura - Information Systems Department - GIS Division
 State Plane Coordinate System California Zone V - NAD 27
 This map was compiled from records and computations

