



VENTURA LOCAL AGENCY FORMATION COMMISSION  
**STAFF REPORT**

Meeting Date: May 17, 2023

**TO:** LAFCo Commissioners

**FROM:** Andrea Ozdy, Deputy Executive Officer *Andrea Ozdy*

**SUBJECT:** Sphere of Influence Review:  
 LAFCo 23-06S Blanchard/Santa Paula Library District

**Recommendations:**

- A. Determine that the action to review the sphere of influence for Blanchard/Santa Paula Library District (BSPLD or District) is exempt from the California Environmental Quality Act (CEQA) pursuant to Section 15061(b)(3) of the CEQA Guidelines.
- B. Adopt Resolution LAFCo 23-06S (Attachment 2) making determinations and reviewing the sphere of influence for the District pursuant to Government Code Section 56425(g), including that a sphere of influence update is not necessary.

**Background:**

Pursuant to the Cortese-Knox-Hertzberg Local Government Reorganization Act of 2000 (Government Code Section 56000 et seq.), the Commission was required to determine and adopt a sphere of influence (or “sphere”) for each city and special district on or before January 1, 2008. A sphere of influence is defined in Government Code Section 56076 as the probable physical boundary and service area of a local agency, as determined by the Commission. Every five years thereafter, the Commission must, as necessary, review and update each sphere of influence (Government Code Section 56425(g)).

In compliance with Government Code Section 56425(g), the Commission accepted a municipal service review (MSR) report, entitled *Blanchard/Santa Paula Library District Municipal Service Review*, for the District on July 18, 2018. Based on the MSR, the Commission determined a sphere of influence for the BSPLD. The Commission has not modified the District’s sphere since its establishment in 2018.

COMMISSIONERS AND STAFF

COUNTY	CITY	DISTRICT	PUBLIC
Jeff Gorell	Jenny Crosswhite, Vice-Chair	Raul Avila	Pat Richards, Chair
Janice S. Parvin <i>Alternate</i>	John C. Zaragoza <i>Alternate</i>	Mary Anne Rooney <i>Alternate</i>	<i>Alternate</i>
Matt LaVere	Susan Santangelo	Mohammed A. Hasan	David J. Ross
<b>Executive Officer</b> Kai Luoma	<b>Deputy Executive Officer</b> Andrea Ozdy	<b>Office Manager/Clerk</b> Richelle Beltran	<b>Legal Counsel</b> Jeffrey Barnes

## **Discussion:**

### *District Information*

The Blanchard Community Library opened in 1910 as a city library within the City of Santa Paula. The District was formed in 1967 and is an independent special district that was previously known as the Santa Paula Union High School Public Library District. The library is currently located at 119 N. 8th Street in the City of Santa Paula. Its service area includes the City of Santa Paula and surrounding areas on all sides of the City, and continues to align with the boundaries of the Santa Paula Unified School District. The BSPLD is an independent special district and is governed by a five-member board of trustees. The District's sphere of influence covers approximately 68,661 acres (about 107 square miles), and its jurisdictional boundary is coterminous with its sphere (Attachment 1).

### *Current Sphere of Influence Review*

LAFCo staff consulted with the District's general manager to discuss the District's sphere of influence, and to determine: (1) if the District has experienced any changes to its service needs or areas since LAFCo's most recent evaluation of its sphere of influence, and (2) if the District staff anticipates any service changes that would warrant adjustment of the sphere boundaries. The existing sphere of influence boundary continues to reflect the District's current and probable service area. Therefore, it is recommended that the Commission review, but not update, the subject spheres of influence.

### *Written Determinations*

Government Code Section 56425(e) requires that, in determining the sphere of influence of an agency, the Commission consider and prepare a written statement of its determinations with respect to each of the following:

- (1) *The present and planned land uses in the area, including agricultural and open-space lands.* (Section 56425(e)(1))

The territory within the sphere of influence of the BSPLD consists of the entire City of Santa Paula jurisdictional boundary and sphere of influence (totaling approximately 3,939 acres) and surrounding unincorporated area (approximately 64,722 acres), and is coterminous with the 68,661-acre BSPLD jurisdictional area. The City's General Plan designates a variety of land uses within the City, including but not limited to residential, commercial, industrial, mixed use, airport, open space, and agricultural uses. The unincorporated area has County General Plan designations consisting primarily of *Open Space* and *Agricultural*, with limited areas that are designated as *Existing Community*. The BSPLD has served the Santa Paula community since 1967, and has had no impact on the present and planned land uses within its service area, new development, changes in land use, or agricultural and open space

lands. Based on the land use designations and characteristics of the land contained within the District's sphere, existing land uses are expected to remain unchanged, and the sphere reflects both the existing and planned service area of the BSPLD.

- (2) *The present and probable need for public facilities and services in the area. (Section 56425(e)(2))*

The Blanchard Community Library facility and equipment currently meets the needs of its customers pertaining to access to a robust library collection, educational and social programs, and quiet reading and study space. The BSPLD's service area is expected to experience population growth as a result of new housing development projects within the City of Santa Paula. The District is pursuing projects to continue to meet community demand and to expand its reach within its service area, primarily through a variety of modifications to the existing Blanchard Community Library building that will result in an improved layout and updated features to better serve its patrons and the development of area adjacent to the library to expand opportunities for community group gatherings.

- (3) *The present capacity of public facilities and adequacy of public services that the agency provides or is authorized to provide. (Section 56425(e)(3))*

The BSPLD employs both full-time and part-time workers. In addition, the BSPLD relies on volunteers who are involved with activities such as fundraising (including book sales) and book-mending. The District has demonstrated that it has the capacity, through operation of the Blanchard Community Library, to provide the necessary facilities and services to meet the needs of library patrons, and it continues to pursue new funding and opportunities to improve its services and library facility. It appears that the District has the ability to meet the current demand for facilities and services within its service area and sphere of influence, and additional demands would not adversely impact the present capacity of public facilities and adequacy of public services that the District provides or is authorized to provide.

- (4) *The existence of any social or economic communities of interest in the area if the commission determines that they are relevant to the agency. (Section 56425(e)(4))*

The District's sphere of influence does not include territory that is known to be a community of interest. No disadvantaged unincorporated communities (defined in Government Code Section 56033.5 as communities having an annual median household income that is less than 80 percent of the statewide annual median household income), are located within or contiguous to the District's sphere of influence.

(5) *For an update of a sphere of influence of a city or special district that provides public facilities or services related to sewers, municipal and industrial water, or structural fire protection. . . the present and probable need for those public facilities and services of any disadvantaged unincorporated communities within the existing sphere of influence.*  
(Section 56425(e)(5))

The review of the District's sphere of influence is not considered an update (i.e., a modification) to the sphere. Additionally, no disadvantaged unincorporated communities are located within or contiguous to the District's sphere of influence.

#### *California Environmental Quality Act (CEQA)*

A project is defined in CEQA Section 21065, in part, as "an activity which may cause either a direct physical change in the environment, or a reasonably foreseeable indirect physical change in the environment." Staff recommends that the Commission find that the review of the District's sphere of influence is exempt from CEQA pursuant to Section 15061(b)(3) of the CEQA Guidelines, because "it can be seen with certainty that there is no possibility that the activity in question may have a significant effect on the environment." No change in regulation, land use, or development will occur as a result of the recommended sphere of influence review.

Therefore, if the Commission determines that no updates to the subject spheres of influence are necessary, no environmental document is required to be prepared.

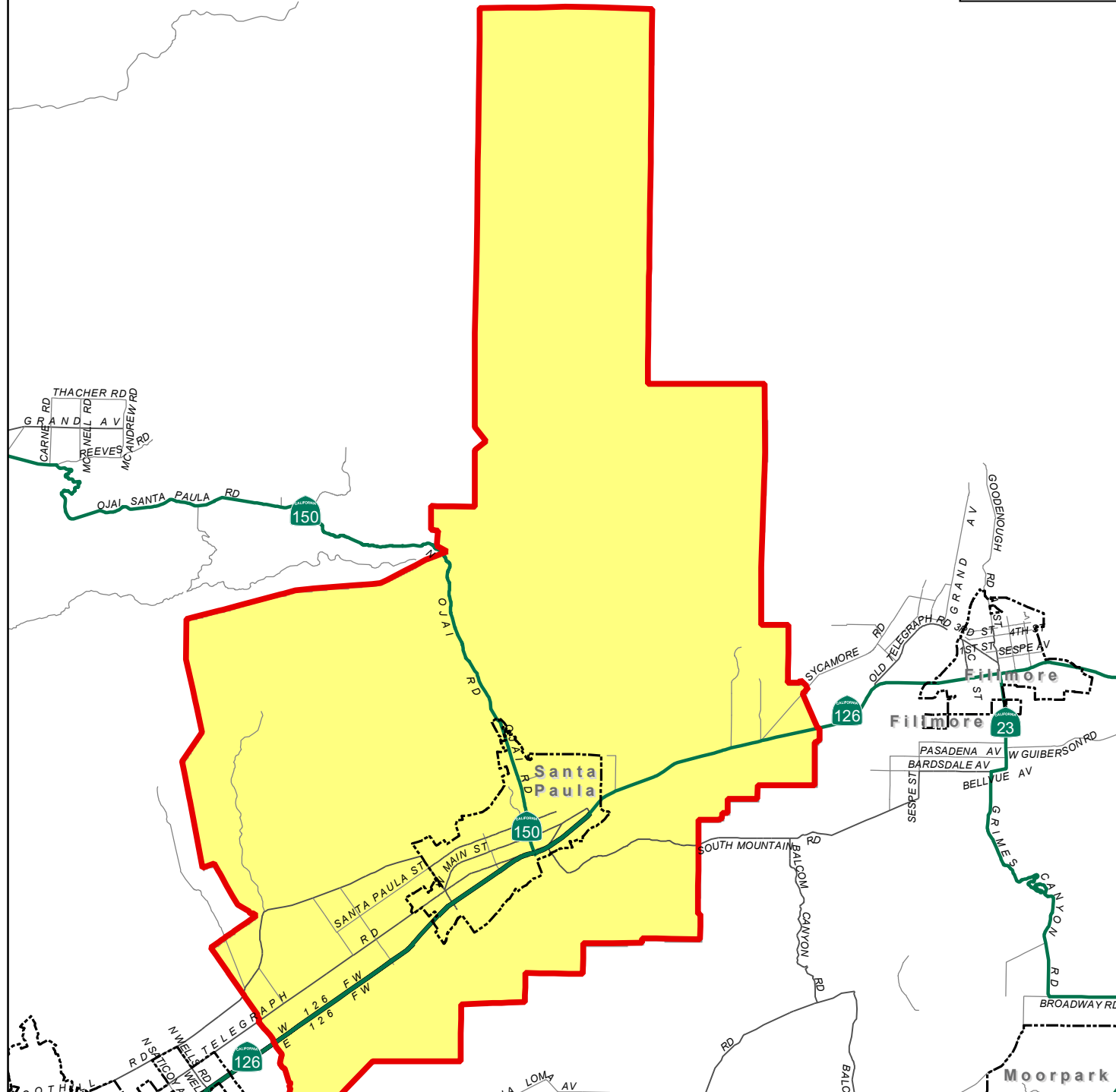
#### *Notice of Public Hearing*

This matter has been noticed as a public hearing pursuant to Government Code Section 56427. Additionally, all affected agencies have been notified of the public hearing.

#### Attachments:

1. Existing Sphere of Influence Map for the Blanchard/Santa Paula Library District
2. LAFCo 23-06S Resolution

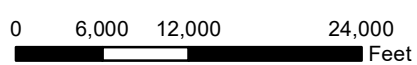
LAFCo makes every effort to offer legible map files with the online and printed versions of our reports; however, occasionally the need to reduce oversize original maps and/or other technological/software factors can compromise readability. Original maps are available for viewing at the LAFCo office by request.



# Blanchard/Santa Paula Library District

## Current as of July 18, 2018

Prepared by County of Ventura - IT Services Department - GIS Division  
 State Plane Coordinate System California Zone V - NAD 27  
 This map was compiled from records and computations



Copyright 2018 County of Ventura. Design, maps, index and text of this map are copyrighted. It is unlawful to copy or reproduce, either in digital or paper form, any part thereof for personal use or resale.

**WARNING:** The information contained hereon was created by the Ventura County Geographic Information System (GIS), which is designed and operated solely for the convenience of the County and related contract entities. The County does not warrant the accuracy of this information, and no decision involving a risk of economic loss or physical injury should be made in reliance thereon.

**LAFCO 23-06S****RESOLUTION OF THE VENTURA LOCAL AGENCY FORMATION  
COMMISSION MAKING DETERMINATIONS AND REVIEWING  
THE SPHERE OF INFLUENCE FOR THE BLANCHARD/SANTA  
PAULA LIBRARY DISTRICT**

WHEREAS, Government Code § 56425 et seq. requires the Local Agency Formation Commission (LAFCo or Commission) to develop and determine the sphere of influence of each local governmental agency within the County; and

WHEREAS, Government Code § 56425(g) requires that on or before January 1, 2008, and every five years thereafter, the Commission shall, as necessary, review and update the sphere of influence of each city and special district; and

WHEREAS, the Commission accepted the Municipal Service Review (MSR) report for the District dated July 18, 2018.

WHEREAS, the Commission established the sphere of influence for the Blanchard/Santa Paula Library District (BSPLD or District) in 2018;

WHEREAS, the Commission desires to review the sphere of influence for the District; and

WHEREAS, no change in regulation, land use, or development will occur as a result of reviewing the sphere of influence for the District; and

WHEREAS, at the times and in the manner required by law, the LAFCo Executive Officer gave notice of the consideration of this item by the Commission; and

WHEREAS, the sphere of influence review item was duly considered at a public hearing on May 17, 2023, as specified in the notice of hearing; and

WHEREAS, the Commission heard, discussed, and considered all oral and written testimony for and against the sphere of influence review including, but not limited to, the LAFCo Staff Report dated May 17, 2023, and recommendations; and

NOW, THEREFORE, BE IT RESOLVED, DETERMINED, AND ORDERED by the Commission as follows:

- (1) The LAFCo Staff Report dated May 17, 2023, and recommended review of the sphere of influence for the District are adopted; and
- (2) The subject sphere of influence review is assigned the following distinctive short form designation:  
**LAFCO 23-06S BLANCHARD/SANTA PAULA LIBRARY DISTRICT SPHERE OF INFLUENCE REVIEW**; and
- (3) An update (modification) to the sphere of influence for the District is not necessary; and
- (4) The sphere of influence review for the District is exempt from the California Environmental Quality Act (CEQA) pursuant to § 15061(b)(3) of the CEQA Guidelines, and LAFCo staff is directed to file a Notice of Exemption as the lead agency pursuant to § 15062 of the CEQA Guidelines; and
- (5) The Commission has considered the criteria set forth in Government Code § 56425(e) and determines as follows:

**a. *The present and planned land uses in the area, including agricultural and open-space lands. (§ 56425(e)(1))***

The territory within the sphere of influence of the BSPLD consists of the entire City of Santa Paula jurisdictional boundary and sphere of influence (totaling approximately 3,939 acres) and surrounding unincorporated area (approximately 64,722 acres), and is coterminous with the 68,661-acre BSPLD jurisdictional area. The City's General Plan designates a variety of land uses within the City, including but not limited to residential, commercial, industrial, mixed use, airport, open space, and agricultural uses. The unincorporated area has County General Plan designations consisting primarily of *Open Space* and *Agricultural*, with limited areas that are designated as *Existing Community*. The BSPLD has served the Santa Paula community since 1967, and has had no impact on the present and planned land uses within its service area, new development, changes in land use, or

agricultural and open space lands. Based on the land use designations and characteristics of the land contained within the District's sphere, existing land uses are expected to remain unchanged, and the sphere reflects both the existing and planned service area of the BSPLD.

**b. *The present and probable need for public facilities and services in the area.***  
**(§ 56425(e)(2))**

The Blanchard Community Library facility and equipment currently meets the needs of its customers pertaining to access to a robust library collection, educational and social programs, and quiet reading and study space. The BSPLD's service area is expected to experience population growth as a result of new housing development projects within the City of Santa Paula. The District is pursuing projects to continue to meet community demand and to expand its reach within its service area, primarily through a variety of modifications to the existing Blanchard Community Library building that will result in an improved layout and updated features to better serve its patrons and the development of area adjacent to the library to expand opportunities for community group gatherings.

**c. *The present capacity of public facilities and adequacy of public services that the agency provides or is authorized to provide.*** (§ 56425(e)(3))

The BSPLD employs both full-time and part-time workers. In addition, the BSPLD relies on volunteers who are involved with activities such as fundraising (including book sales) and book-mending. The District has demonstrated that it has the capacity, through operation of the Blanchard Community Library, to provide the necessary facilities and services to meet the needs of library patrons, and it continues to pursue new funding and opportunities to improve its services and library facility. It appears that the District has the ability to meet the current demand for facilities and services within its service area and sphere of influence, and additional demands would not adversely impact the present capacity of public facilities and adequacy of public services that the District provides or is authorized to provide.



**d. *The existence of any social or economic communities of interest in the area if the commission determines that they are relevant to the agency. (§ 56425(e)(4))***

The District's sphere of influence does not include territory that is known to be a community of interest. No disadvantaged unincorporated communities (defined in Government Code Section 56033.5 as communities having an annual median household income that is less than 80 percent of the statewide annual median household income), are located within or contiguous to the District's sphere of influence.

**e. *For an update of a sphere of influence of a city or special district that provides public facilities or services related to sewers, municipal and industrial water, or structural fire protection. . . the present and probable need for those public facilities and services of any disadvantaged unincorporated communities within the existing sphere of influence. (§ 56425(e)(5))***

The review of the District's sphere of influence is not considered an update (i.e., a modification) to the sphere. Additionally, no disadvantaged unincorporated communities are located within or contiguous to the District's sphere of influence.

- (6) The sphere of influence for the District is hereby reviewed and is generally depicted in Exhibit A, "Blanchard/Santa Paula Library District," attached hereto; and
- (7) LAFCo staff is directed to have the official Geographic Information System (GIS) sphere of influence data maintained for the Ventura LAFCo by the Ventura County Information Technology Services Department as the official sphere of influence record for the District updated consistent with this action.

This resolution was adopted on May 17, 2023.

	AYE	NO	ABSTAIN	ABSENT
Commissioner Avila	<input checked="" type="checkbox"/>	<input type="checkbox"/>	<input type="checkbox"/>	<input type="checkbox"/>
Commissioner Crosswhite	<input checked="" type="checkbox"/>	<input type="checkbox"/>	<input type="checkbox"/>	<input type="checkbox"/>
Commissioner Gorell	<input checked="" type="checkbox"/>	<input type="checkbox"/>	<input type="checkbox"/>	<input type="checkbox"/>
Commissioner Parvin	<input checked="" type="checkbox"/>	<input type="checkbox"/>	<input type="checkbox"/>	<input type="checkbox"/>
Commissioner Richards	<input checked="" type="checkbox"/>	<input type="checkbox"/>	<input type="checkbox"/>	<input type="checkbox"/>
Commissioner Rooney	<input checked="" type="checkbox"/>	<input type="checkbox"/>	<input type="checkbox"/>	<input type="checkbox"/>
Commissioner Zaragoza	<input type="checkbox"/>	<input type="checkbox"/>	<input type="checkbox"/>	<input checked="" type="checkbox"/>
Alt. Commissioner Hasan	<input type="checkbox"/>	<input type="checkbox"/>	<input type="checkbox"/>	<input type="checkbox"/>
Alt. Commissioner LaVere	<input type="checkbox"/>	<input type="checkbox"/>	<input type="checkbox"/>	<input type="checkbox"/>
Alt. Commissioner Ross	<input type="checkbox"/>	<input type="checkbox"/>	<input type="checkbox"/>	<input type="checkbox"/>
Alt. Commissioner Santangelo	<input checked="" type="checkbox"/>	<input type="checkbox"/>	<input type="checkbox"/>	<input type="checkbox"/>

5-17-23

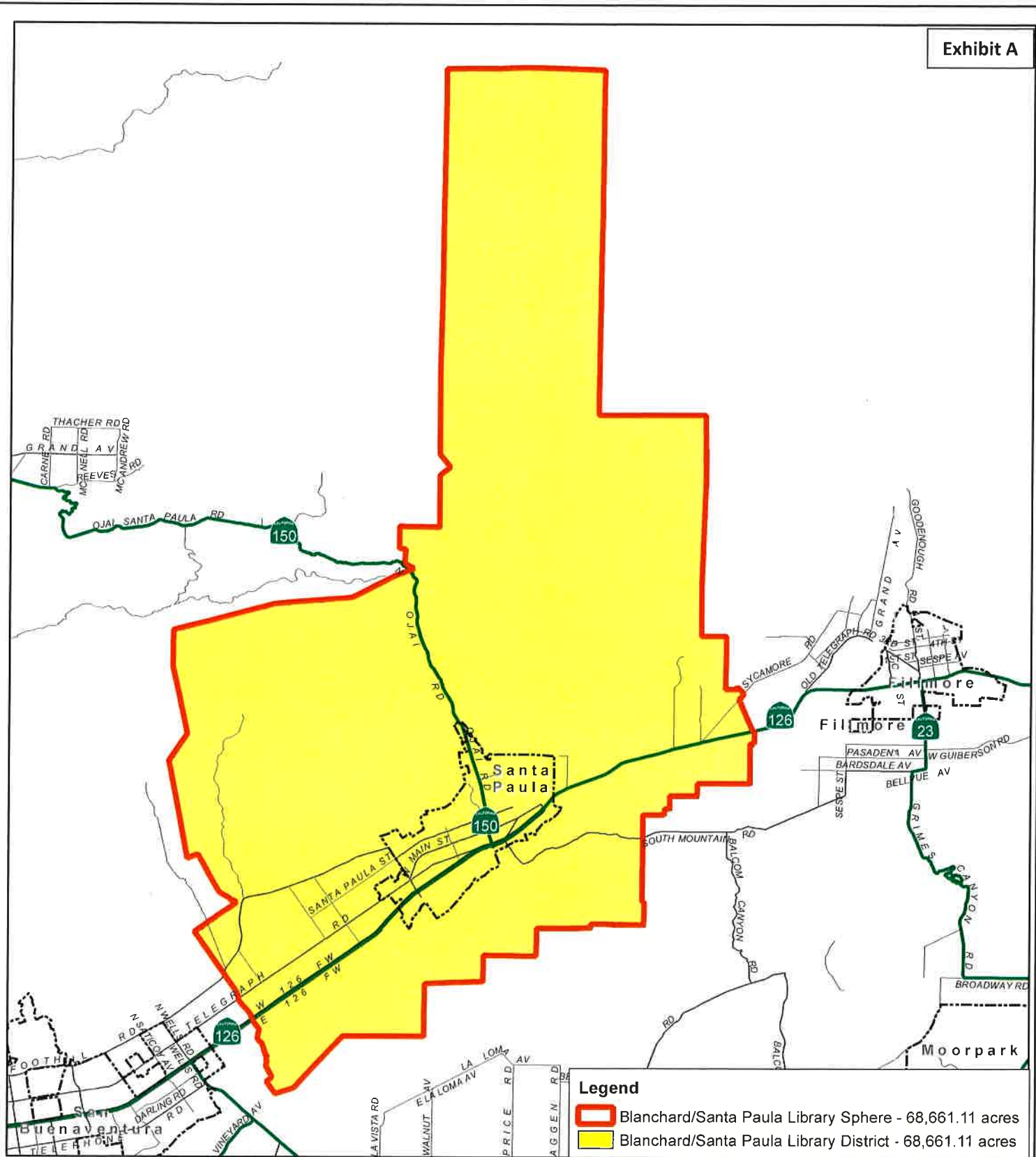
Date

Pat Richards

Chair, Ventura Local Agency Formation Commission

Attachment: Exhibit A

c: Blanchard/Santa Paula Library District  
Ventura County Information Technology Services Department



## Blanchard/Santa Paula Library District

Current as of July 18, 2018

Prepared by County of Ventura - IT Services Department - GIS Division  
 State Plane Coordinate System California Zone V - NAD 27  
 This map was compiled from records and computations

